

CUSTOMER:
REFERENCE:

GETINGE AGS- AIR GLIDE SYSTEM

PRODUCT SPECIFICATION

PRODUCT

Getinge Air Glide System - AGS - is a fully automatic loading and unloading system for Getinge washer disinfectors 8666/8668/88-Series. The AGS is built up by:

- Loading and unloading conveyors; here the wash carts with soiled goods are placed and collected when the clean wash carts are ready.
- Framework with linear unit; the AGS is built up by an independent framework, around the machines. On top of the washer disinfectors, the linear unit drives the hanging shuttle horizontally in front of them.
- Hanging shuttles; the shuttle on the soiled side collects the wash cart from the loading conveyor as soon as one of the washer disinfectors is available. The shuttle then moves along the washer disinfectors and loads them automatically.

The shuttle on the clean side automatically unloads the wash cart from the washer disinfectors and brings it to the unloading conveyor.

The AGS can also be combined with an FSC (Free Standing Conveyor) (see separate product specification) for the returning process of the wash carts, as an option together with a hatch or Pass-Through-Chamber.

The AGS can be ordered in different lengths, with space for 3 to total 10 washer disinfectors. Within this range, up to 4 spare places can be chosen for future demands and additional units.

APPLICATIONS

The AGS's main target groups are CSSDs and central cleaning rooms for glassware, or other locations where high capacity and efficiency is demanded. AGS is created for the disinfectors Getinge 8666/8668/88-Series.

KEY FEATURES

- The Getinge AGS is built on an independent framework. The hanging shuttle operates parallel with the disinfectors and leaves an open floor space. Due to the parallel arrangement of washers there is always back up capacity and maximal availability.
- Each shuttle, soiled and clean side, is equipped with a hook, which is used for loading and unloading wash carts. The loading and unloading conveyors are installed in a fixed position with recommended silicon along the floor. The conveyors process the carts via a rotating belt.



- The AGS is equipped with sensors on the conveyors, shuttle, wash carts and machines.
- The capacity and efficiency are very high through the automatic processing of goods and automatic program selection for each individual goods type.
- The open space in front of the machines makes it easy to manually load and unload, and also to conduct service on the disinfectors.
- The AGS has a control system separated from the washer disinfectors. The control system is equipped with a built-in safety system, which stops the shuttle if a person or object is touched.
- All outer surfaces are made of stainless steel 1.4301/ AISI 304.

QUALITY STATEMENT

Confidence in the Getinge Group is the most important quality criterion. It must be the hallmark of all our external and internal commitments, activities and products. Products and service supplied by Getinge must conform to the agreed terms and expectations to ensure recommendations for further business. The achievement of these quality goals is the basis for continued complete and successful enterprise.

STANDARDS AND CODES

The Getinge AGS has been tested and approved according to the following standards and codes.

- ETL/SEMKO (Testing Laboratories Inc.)
Standard:EN/IEC 61010-1, UL 3111-1, UL 3121-1
UL 61010A-1, CAN/CSA-C22.2 No.1010.1-92.
- EMC (Electromagnetic Compatibility)
Standard:FCC part 18

CUSTOMER:

REFERENCE:

ORDERING INFORMATION

PRODUCT SELECTIONS FOR ORDERING

For ordering tick in your selections.

- Standard choice Optional choice

WASHER DISINFECTOR

Please indicate washer disinfector for the AGS:

- AGS for 8666
 AGS for 8668
 AGS for 88-Series

AGS CAPACITY

- 3 normal spaces for washers
 4 normal spaces for washers
 5 normal spaces for washers
 6 normal spaces for washers
 7 normal spaces for washers
 8 normal spaces for washers
 9 normal spaces for washers
 10 normal spaces for washers
 3 washers with service space (500mm / machine)*
 4 washers with service space (500mm / machine)*
 5 washers with service space (500mm / machine)*
 6 washers with service space (500mm / machine)*
 7 washers with service space (500mm / machine)*

Spare places for future machines (calculated as part of the total amount of spaces chosen above):

- 1 spare place, place no ___
 2 spare places, place no ___ and no ___
 3 spare place, place no ___ and no ___ and no ___
 4 spare place, place no ___ and no ___ and no ___ and no ___

NOTE: Maximum capacity of AGS, normal + spare, is 10 spaces.

* This option only available for 88-Series

Only for 8666/8668

As standard, the AGS for 3-6 places are supplied with the linear unit (rail) as one piece. For 7-10 places the rail is always divided into 2 pieces. The smaller rail for 3-6 places can also be delivered in 2 pieces as an alternative.

- split rail

Only for 88-Series

As standard, the AGS for 3-5 places are supplied with the linear unit (rail) as one piece. For 6-10 places the rail is always divided into 2 pieces. If service space is chosen the rail will also be divided into 2 pieces. The smaller rail for 3-6 places can also be delivered in 2 pieces as an alternative.

- split rail

All models

As standard the AGS is supplied with a L cable tray between loading and unloading conveyor

- No cable trays (cables placed on the floor or in the sealing) Contact the supplier.

ELECTRICAL CONNECTIONS

- 415 V, 3N+PE, 50 Hz, 3x16 A, 4 kW
 400 V, 3N+PE, 50 Hz, 3x16 A, 4 kW
 380 V, 3N+PE, 60 Hz, 3x16 A, 4 kW
 380 V, 3N+PE, 50 Hz, 3x16 A, 4 kW
 240 V, 3+PE, 60 Hz, 3x16 A, 4 kW
 230 V, 3+PE, 50 Hz, 3x16 A, 4 kW
 208 V, 3+PE, 60 Hz, 3x16 A, 4 kW
 200 V, 3+PE, 60 Hz, 3x16 A, 4 kW
 200 V, 3+PE, 50 Hz, 3x16 A, 4 kW

COMPRESSED AIR CONNECTION

Recommended compressed air supply is 6 bar, 200l/min.

CONVEYORS

Loading conveyors

- for 2 wash carts
 for 3 wash carts
 for 4 wash carts

Unloading conveyors

- for 2 wash carts
 for 3 wash carts
 for 4 wash carts

Conveyor placement

The conveyors can be placed to the right or left of the AGS.

- Loading conveyors placed at the right side of the AGS
 Loading conveyors placed at the left side of the AGS
 Unloading conveyors placed at the right side of the AGS
 Unloading conveyors placed at the left side of the AGS

For special requirements, please contact the manufacturer for other solutions.

OPERATING PANEL

Select side for operation panel.

- Operator panel placed to the left of the loading side
 Operator panel placed to the right of the loading side
 Operator panel placed to the left of the unloading side
 Operator panel placed to the right of the unloading side

An installation drawing over the AGS must be provided with the order.

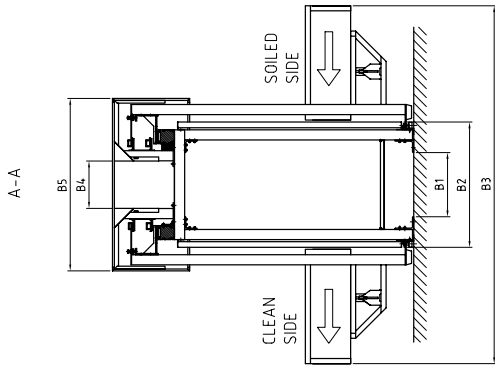
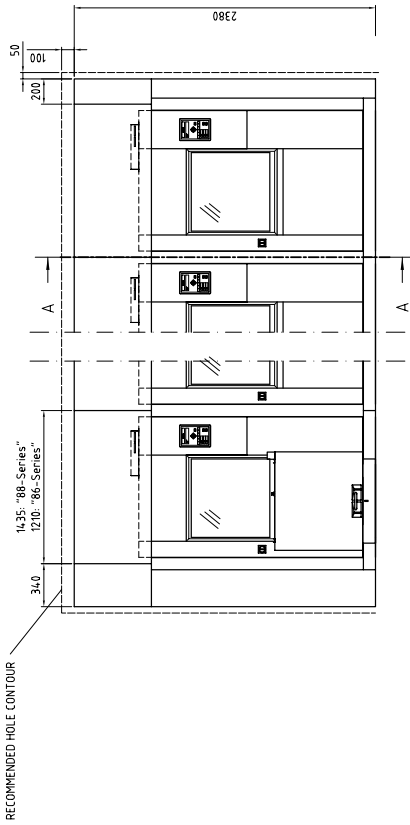
There is an option to order a return conveyor as a complete free standing unit, equipped with its own electrical cabinet and air supply (please see separate product specification "Getinge Free Standing Conveyor").

DOCUMENTATION

One delivery of AGS contains the following documentation:

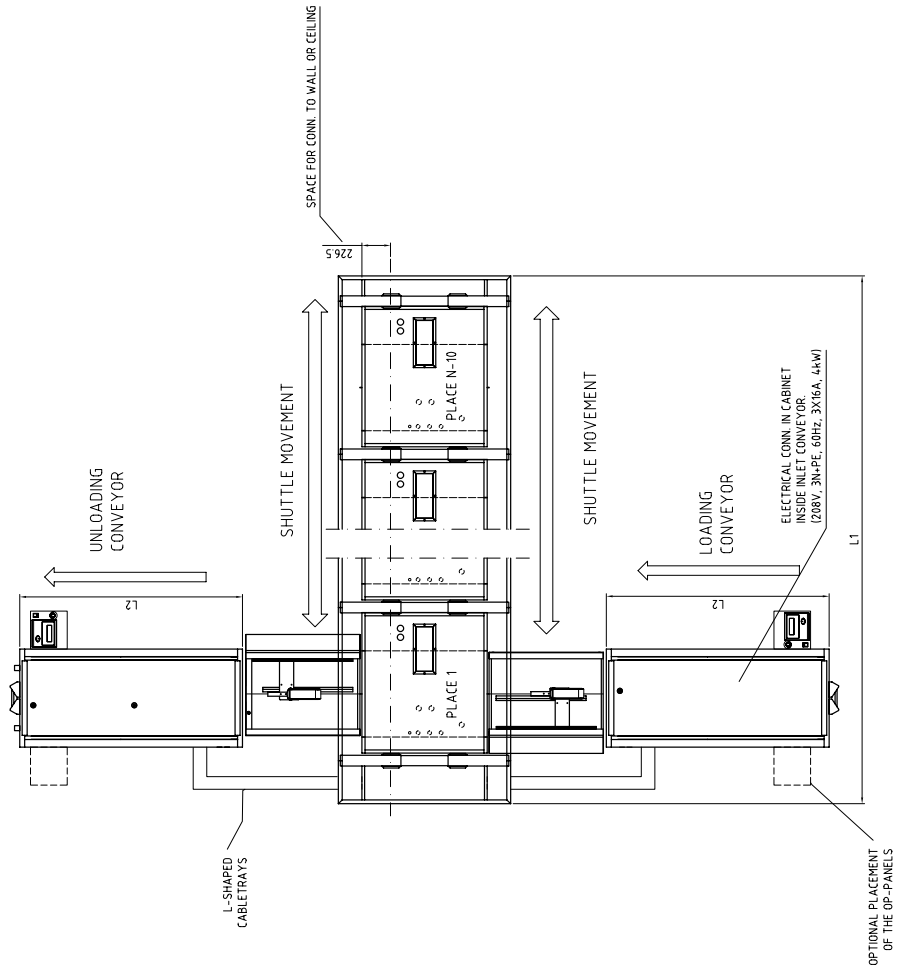
- User Manual
- Installation Manual
- Standard Spare Part List
- Service Manual
- Declaration of Conformity

TECHNICAL DRAWING



FOR 8666:
B1=427, B2=910, B3=2747, B4=294, B5=1282

FOR 8668/88-S:
B1=504, B2=990, B3= 2827, B4=374, B5=1362



Drawing VR070136648

CONFIGURATION

Number of places	Total length	Location (see drawing on page 3)
Standard AGS-version for 8666/8668		
3 places	4 170 mm	L1
4 places	5 380 mm	L1
5 places	6 590 mm	L1
6 places	7 800 mm	L1
7 places	9 010 mm	L1
8 places	1 0220 mm	L1
9 places	1 1430 mm	L1
10 places	12 640 mm	L1
Extended AGS-version for 88-Series		
3 places	4 845 mm	L1
4 places	6 280 mm	L1
5 places	7 715 mm	L1
6 places	9 150 mm	L1
7 places	10 585 mm	L1
8 places	12 020 mm	L1
9 places	13 455 mm	L1
10 places	14 890 mm	L1
3 places with service space	6 349 mm	L1
4 places with service space	8 284 mm	L1
5 places with service space	10 219 mm	L1
6 places with service space	12 154 mm	L1
7 places with service space	14 089 mm	L1
Conveyor		
8666		
Inlet Conveyor for 2 carts	1 600 mm	L2
Inlet Conveyor for 3 carts	2 400 mm	L2
Inlet Conveyor for 4 carts	3 200 mm	L2
Outlet Conveyor for 2 carts	1 600 mm	L2
Outlet Conveyor for 3 carts	2 400 mm	L2
Outlet Conveyor for 4 carts	3 200 mm	L2
8668/88-Series		
Inlet Conveyor for 2 carts	1 760 mm	L2
Inlet Conveyor for 3 carts	2 640 mm	L2
Inlet Conveyor for 4 carts	3 520 mm	L2
Outlet Conveyor for 2 carts	1 760 mm	L2
Outlet Conveyor for 3 carts	2 640 mm	L2
Outlet Conveyor for 4 carts	3 520 mm	L2

CUSTOMER:
REFERENCE:



Getinge provides complete solutions for effective and efficient cleaning, disinfection and sterilization in the healthcare and life science sectors. Our know-how comprises everything from architectural planning, production and handling equipment, to systems for full traceability of sterile goods. Our commitment covers expert advice, training and long-term technical support.

GETINGE

Getinge Infection Control AB
PO Box 69, SE-310 44 Getinge, Sweden
Phone: +46 35 15 55 00
Fax: +46 35 549 52
info@getinge.com www.getinge.com

GETINGE

GETINGE GROUP is a leading global provider of equipment and systems that contributes to quality enhancement and cost efficiency within healthcare and life sciences. Equipment, services and technologies are supplied under the brands **ARJO** for patient hygiene, patient handling and wound care, **GETINGE** for infection control and prevention within healthcare and life science and **MAQUET** for surgical workplaces, cardiopulmonary and critical care.

APPENDIX

Document History, PS07-0007 Getinge AGS

Date	Edition	Change	Updated by
2007-02-07	A	First edition	Hanna Lindblom
2008-09-15	B	Added choice with service space. Added text about split rail with service space. Changed text in the choice with No cable trays. Changed text for Operation panel. Changed installation drawing. Added measurement for service space AGS.	Jörgen Thernström
2009-03-27	C	Corrected spelling on page 4 Clarified choice on Conveyor and op-panel	Jörgen Thernström