



Equipment Datasheet

Item Description
Defibrillator, External Battery Charger

Equipment Number
17-115

Manufacturer ----- Medtronic Physio Control ----- -----	Model ----- LifePak 15 Station Battery Chager ----- -----
--	--

Further Description:

- Designed for LIFEPAK 15 monitor/defibrillator Lithium-ion batteries only
- Number of Battery Wells: 2
- Power Requirements:
- AC: 100-240 V AC, 50/60 Hz, 1.4 Amps maximum
- Safety Class: Safety Class I (with Class II parts)



Specifications:

Dimensions and Weight:

- Dimensions: 28.96 cm (11.40 in) length x 11.43 cm (4.50 in) height x 18.69 cm (7.36 in) width maximum
- Weight: 3.2 kg (7.0 lbs) maximum

Building Considerations:

- Essential power
- Backing for wall mounted bracket

Supporting Documents:

Product: [Literature](#)

This information is provided for planning purposes only and is not to be relied upon. Final installation specifications are dependent upon selected supplier's shop drawings.

LIFEPAK[®] 15 MONITOR/DEFIBRILLATOR

Works like you work.™

ACCESSORIES

BATTERIES AND CHARGERS

Physio-Control is committed to providing high-quality and reliable accessories to support your lifesaving work with the LIFEPAK 15 monitor/defibrillator. The station and mobile battery chargers and powerful Lithium-ion batteries help ensure the 15 is ready for rescue when and where you need it.



LITHIUM-ION BATTERIES

Smart, powerful technology

Battery power that beats or matches every competitor in the market. Enough juice to run a shift, with less weight. This high-capacity Lithium-ion battery enables extended, multi-parameter monitoring. No conditioning is required.

Ready for rescue

Two checkpoints enable you to ensure the 15 is ready to go when needed. A push-button fuel gauge on the Lithium-ion batteries enables a quick and easy check of battery capacity. A symbol on the device screen is designed to reliably indicate the battery's charge level.



BATTERY CHARGERS

For use with Lithium-ion batteries for the LIFEPAK 15 monitor/defibrillator.

Advanced yet simple

These innovative and highly automated systems provide rapid charging and ease of use. Charging automatically begins when the battery is inserted. There are no buttons to push.

Quiet and convenient

Whisper quiet operation does not distract from patient care. A mounting bracket is included for space-saving installation.

STATION BATTERY CHARGER

110-240 V AC power cord for use in stationary applications

MOBILE BATTERY CHARGER

12 V DC and 110-240 V AC power cords for use in mobile and/or stationary applications

Physio-Control offers leading-edge solutions for the problems you face today and configurable capabilities for the solutions you will need tomorrow.

STATION BATTERY CHARGER

GENERAL SPECIFICATIONS

Designed for LIFEPAK 15 monitor/defibrillator
Lithium-ion batteries only

Dimensions: 28.96 cm (11.40 in) length x 11.43 cm (4.50 in) height x 18.69 cm (7.36 in) width maximum

Weight: 3.2 kg (7.0 lbs) maximum

Number of Battery Wells: 2

Power Requirements:

AC: 100-240 V AC, 50/60 Hz, 1.4 Amps maximum

Safety Class: Safety Class I (with Class II parts)

ENVIRONMENTAL SPECIFICATIONS

Not protected against ingress of fluids; indoor use only

Altitude, Operating: 795 mmHg to 522 mmHg (-1,253 ft to 10,000 ft)

Humidity: 5 to 95% non-condensing

Temperature, Operating and Charging (AC power): 10° to 40°C (50° to 104°F)

Temperature, Storage: -40° to 70°C (-40° to 158°F)

MOBILE BATTERY CHARGER

GENERAL SPECIFICATIONS

Designed for LIFEPAK 15 monitor/defibrillator
Lithium-ion batteries only

Dimensions: 28.96 cm (11.40 in) length x 11.43 cm (4.50 in) height x 18.69 cm (7.36 in) width maximum

Weight: 3.2 kg (7.0 lbs) maximum

Number of Battery Wells: 2

Power Requirements:

AC: 100 to 240 V AC, 50/60 Hz, 1.4 Amps maximum

DC: 11.1 to 14.5 V DC, 8 Amps maximum

Safety Class: Safety Class II (reinforced insulation)

ENVIRONMENTAL SPECIFICATIONS

IP31 dust/fluid ingress rating; indoor or inside vehicle use only

Altitude, Operating: 795 mmHg to 522 mmHg (-1,253 ft to 10,000 ft)

Humidity: 5 to 95% non-condensing

Temperature, Operating and Charging (AC power): 10° to 40° C (50° to 104°F)

Temperature, Operating (DC power): 0° to 50°C (32° to 122°F)

Temperature, Charging (DC power): 5° to 50°C (41° to 122°F)

Temperature, Storage: -40° to 70°C (-40° to 158°F)

LIFEPAK LITHIUM-ION BATTERIES

PHYSICAL CHARACTERISTICS

IP44 dust/fluid ingress rating

Battery Type: Lithium-ion

Weight: 0.64 kg (1.4 lbs)

Voltage: 11.1 V typical (Rated at 12 V)

Capacity: 5.7 amp hours, 63 Wh rated capacity

Charge Time (with fully depleted battery): 4.25 hours (typical) at 25°C

Charging Temperature Range: 5° to 35°C (41° to 95°F)

Operating Temperature Range: 0° to 50°C (32° to 122°F)

Long-term (>1 week) Storage Temperature Range: 20° to 25°C (68° to 77°F)

Short-term (<1 week) Storage Temperature Range: -20° to 60°C (-4° to 140°F)

Service Life: 2 years

Battery Capacity: For two, new fully-charged batteries, 20°C (68°F)

Operating Mode		Monitoring	Pacing	Defibrillation
		(minutes)	(minutes)	(360J discharges)
Total Capacity to Shutdown	Typical	360	340	420
	Minimum	340	320	400
Capacity After Low Battery	Typical	21	20	30
	Minimum	12	10	6

For further information please contact your local Physio-Control representative or visit www.physio-control.com.



HEADQUARTERS / MANUFACTURING

Physio-Control, Inc.
11811 Willows Road NE
P. O. Box 97006
Redmond, WA 98073-9706 USA
Tel. 425 867 4000
Fax. 425 867 4121
www.physio-control.com

SALES OFFICES

Physio-Control Europe
c/o Medtronic International
Trading Sàrl
Case postale 84
Route du Molliou 31
CH-1131 Tolochenaz
www.medtronic.com
Tél +41 (0)21 802 70 00
Fax +41 (0)21 802 79 00

Physio-Control UK
Medtronic Ltd
Suite One, Sherbourne House
Croxley Business Park
Watford, Herts
WD18 8WW
Tel. 44 1923 212 213
Fax. 44 1923 241 004

Physio-Control Australia
c/o Medtronic Australasia Pty Ltd
97 Waterloo Road
North Ryde, NSW
2113
Tel: 61.2.9857.9000
Fax: 61.2.9878.5100



Item Description Oximeter	Equipment Number 17-148
------------------------------	----------------------------

Potential Manufacturer ----- Nonin Medical Inc. ----- Masimo -----	Model Number ----- PalmSAT ----- Rad -----
---	---

Further Description:

- Battery operated with SpO2, pulse rate, pulse quality, long battery life



Specifications:

Dimensions and weight:
W x D x H: 100 x 170 x 60 mm

Weight: 1 kg

Electrical Requirements:
Battery Operated

Design and Installation Notes:

This information is provided for planning purposes only and is not to be relied upon. Final installation specifications are dependent upon selected supplier's shop drawings.



fraserhealth

Better health.
Best in health care.

Equipment Datasheet

Item Description:
Ventilators, Portable/Home Care

Equipment Number:
17-423

Potential Manufacturer ----- Hamilton ----- Philips -----	Model Number ----- T Series ----- -----
--	---

- Further Description:**
- A portable ventilator with performance of a fully featured ICU ventilator, used for ambulances, helicopters, airplanes, and ships transfers
 - Advanced ventilation modes, including ASV
 - Adult, pediatric, and neonatal ventilation



Specifications:

Dimensions:

Portable: W x D x H: 310 x 210 x 300 mm
Mobile on stand: D x H: 630 x 630 x 1360 mm

Electrical Requirements:

120 V AC, 60 Hz

Data Requirements:

1 data port

- Design and Installation Notes:**
- UPS power is required

This information is provided for planning purposes only and is not to be relied upon. Final installation specifications are dependent upon selected supplier's shop drawings.



fraserhealth

Better health.
Best in health care.

Equipment Datasheet

Item Description:
Ventilator, Intensive Care

Equipment Number:
17-429

Potential Manufacturer	Model Number
COVIDIEN PURITAN BENNETT	
VYAIRE	
MEDTRONIC	

Further Description:

- A ventilator used in intensive care environment with Enhanced noninvasive ventilation (NIV), and seamless Communications –Ventilator supports communication with all major patient monitoring and hospital information systems



Specifications:

Dimensions and weight:

Vent on cart: W x D x H: 590 x 610 x 1370 mm
Vent unit only: 450 x 410 x 330 mm
 Weight: 75 kg

Electrical Requirements:

120 V AC, 50/60 Hz, 12 A

Data Requirements:

1 data port

Plumbing Requirements:

Oxygen and medical air are required

Design and Installation Notes:

- UPS power is required

This information is provided for planning purposes only and is not to be relied upon. Final installation specifications are dependent upon selected supplier's shop drawings.



Equipment Datasheet

Item Description:
Rack, Lead Apron, Mobile

Equipment Number:
17-527

Potential Manufacturer

Infab

Infab

Model Number

Revolution 10 Arm Mobile Apron Rack

20 Hanger

Further Description:

• Heavy Duty Mobile Apron Rack used for storing lead aprons



Specifications:

Dimensions and weight:

W x D x H: 1240 x 790 x 1520 mm
Weight: 50 kg

Design and Installation Notes:

This information is provided for planning purposes only and is not to be relied upon. Final installation specifications are dependent upon selected supplier's shop drawings.



Equipment Datasheet

Item Description:

Mattress, Seclusion

Equipment Number:

17-553

Potential Manufacturer

Med Mattress

Model Number

Seclusion mattress

Further Description:

- Multi-layered, multi-density secure mattress for optimal comfort and postural support



Specifications:

Dimensions:

W x D x H: 920 x 2140 x 160 mm

Design and Installation Notes:

This information is provided for planning purposes only and is not to be relied upon.
Final installation specifications are dependent upon selected supplier's shop drawings.



Item Description Laser, Nd:YAG, Frequency-Doubled, Surgical	Equipment Number 17-729
--	----------------------------

Manufacturer ----- AMS -----	Model Number ----- GreenLight XPS -----
---------------------------------------	--

Further Description:

Specifications:
Please see attached specs



This information is provided for planning purposes only and is not to be relied upon.
Final installation specifications are dependent upon selected supplier's shop drawings.

GreenLight XPS™

Laser Therapy System

FEATURES & BENEFITS

SPECIFICATIONS

PROCEDURE

CLINICAL DATA

RISKS

HEALTHCARE
PROFESSIONALS
RESOURCES

Console: XPS

- Laser type: solid state, frequency doubled
- Wavelength: 532 nm
- Max. power output: 180 W
- Nominal optical hazard distance (NOHD): 33.9 meters (MPE = $1 \times 10^{-3} \text{ W/cm}^2$)
- Eye protection: OD ≥ 6
- Working distance: 0.5–3.0 mm
- Vaporization beam mode: quasi-CW (15 kHz–25 kHz)
- Coagulation beam mode: pulse modulated by 12 Hz, 25% duty cycle
- Compatible fibers: MoXy™ fiber (750 μm core diameter), HPS fibers (600 μm core diameter)
- Optical penetration: 0.8 mm
- Coagulation depth: 1–2 mm
- Coagulation mode: yes; TruCoag™ 5–40 W
- FiberLife™: yes
- Mojo™ Software enabled: yes
- Current draw: 20 A
- Cooling water: internal
- Dimensions: 20" W x 36" D x 43.5" H (50.8 cm x 91.4 cm x 110.5 cm)
- Weight: approximately 420 lb (190 kg)
- Length of power cord: 15 ft (4.6 m)

Key Resources

[Product Instructions >](#)

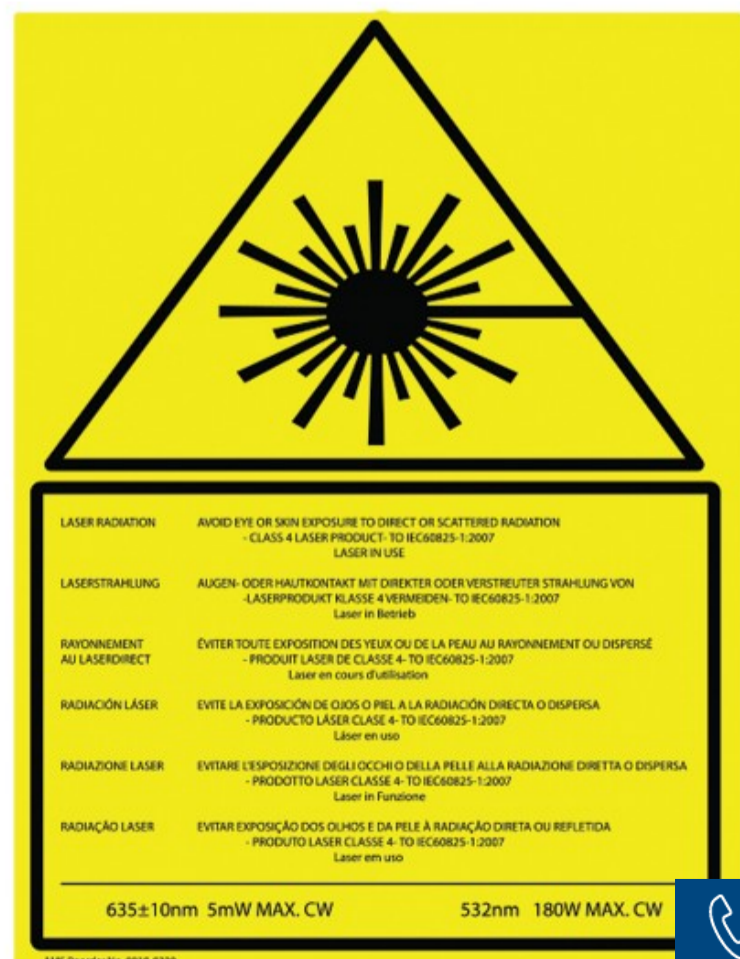
[Reimbursement >](#)

[Product Experience >](#)

[REQUEST A SALES REP VISIT](#)

Fiber: MoXy

- Laser compatibility: XPS
- Firing angle: ~70–80°
- Power range: $\leq 180 \text{ W}$
- Beam area at working distance: 0.44 mm^2
- Energy limit: 650 kJ
- Fiber core diameter: 750 μm
- Fiber tip O.D.: 2.3 mm
- Active Cooling Cap™: Yes
- Use environment: most 22–26 FR continuous flow endoscope/cystoscope



Need Help?
Contact Us



Item Description Lasers, Ho:YAG, Surgical	Equipment Number 17-769
--	----------------------------

Manufacturer ----- Lumenis ----- Olympus -----	Model Number ----- VersaPulse Powersuite 100W -----
---	--

Further Description:

- Precise and controlled cutting and ablation, penetrates just enough to ablate tissue without charring, preventing deep thermal necrosis and minimizing collateral damage
- HoLAP and HoLEP have undergone over 14 randomized controlled trials with proven results
- Supported by the AUA and EAU as first line treatment options for BPH (BNI, TUIP, HoLAP, HoLEP, HoLRP), stones, tumors and strictures
- High repetition rate Stone-Dusting™ procedures enable reduced basket use, while the use of high power breaks the stones faster to reduce procedure time, treating stones of any size, composition and location
- Pulse Duration: Up to 600 microseconds
- Cooling self-contained water-to-air heat exchanger

Specifications:

- Electrical: 230V, 60Hz, 30A Single Phase
- 18" x 36" x 39" (46 cm x 91 cm x 99 cm)
- 340 lbs/155 kg



This information is provided for planning purposes only and is not to be relied upon. Final installation specifications are dependent upon selected supplier's shop drawings.

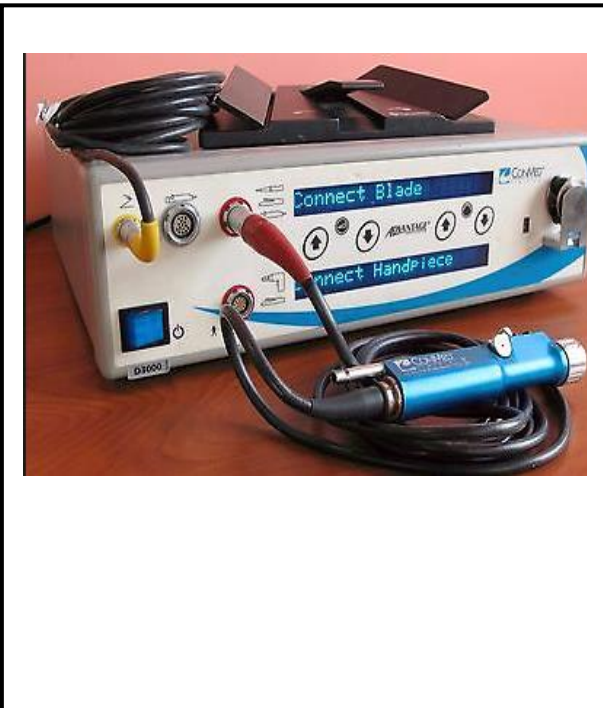


Item Description Arthroscopic Shaver Systems	Equipment Number 17-918
--	-----------------------------------

Potential Manufacturer ----- ConMed ----- Stryker ----- Medtronic	Model Number ----- Advantage ----- Core2 ----- XPS
--	---

Further Description:

- Single control center for various power instruments used in surgical operations environment
- Designed for use in Arthroscopy, Large Bone Orthopedics, Small Bone Orthopedics, Oral/Maxillofacial Surgery, Otolaryngology, Neurosurgery, and Spine



Specifications:

Dimensions:

Shaver: W x D x H: 440 x 350 x 160 mm
Foot Switch: 260 x 120 x 50 mm

Shaver Mobile cart:
W x D x H: 600 x 500 x 1400 mm
Weight: 10 kg

Electrical Requirements:

120 V AC, 50/60 Hz, 500 V A

Data Requirements:

1 Data Port

Design and Installation Notes:

This information is provided for planning purposes only and is not to be relied upon. Final installation specifications are dependent upon selected supplier's shop drawings.



fraserhealth

Better health.
Best in health care.

Equipment Datasheet

Item Description
Hypothermia Unit – Patient Warmer

Equipment Number
17-950

Potential Manufacturer

3M

Stryker

Model Number

Bair Hugger

Mistral-Air

Further Description:

- Forced air warming system with uniform perforation pattern across the blanket surface ensures even convective warming



Specifications:

Dimensions and weight:

Bair hugger: W x D x H: 250 x 340 x 600 mm

Mistral-Air (on a small star stand): 510 x 510 x 1000 mm

Bair-Paw (With Stand): 510 x 510 x 1900 mm

Weight: 20 kg

Electrical Requirements:

120 V AC, 60 Hz, 12A

Design and Installation Notes:

This information is provided for planning purposes only and is not to be relied upon. Final installation specifications are dependent upon selected supplier's shop drawings.



Item Description Infant Warmer	Equipment Number 17-956
--	-----------------------------------

Potential Manufacturer ----- GE ----- Draeger -----	Model Number ----- Resuscitaire -----
--	---

Further Description:

- Infant warmer with Automatic or manual heat control, audible and visual alarms
- Exam light, drawers, shelves, integrated (resuscitation, SpO2, and scale)



Specifications:

Dimensions and weight:
W x D x H: 680 x 1200 x 2180mm
Weight: 130 kg

Electrical Requirements:
120 V, 60Hz, 10 A

Data Requirements:
1 data port

Design and Installation Notes:

This information is provided for planning purposes only and is not to be relied upon. Final installation specifications are dependent upon selected supplier's shop drawings.



Equipment Datasheet

Item Description:
Scalpel and Vessel Sealing, Ultrasonic

Equipment Number:
18-049

Potential Manufacturer	Model Number
----- Ethicon	----- GEN11 Generator
----- Medtronic	-----

Further Description:

- Ultrasonic wave generator with universal connector and automatic instrument recognition used in operation rooms for patient care



Specifications:

Dimensions and weight:
W x D x H: 480 x 570 x 1100 mm
Weight: 25 kg

Electrical Requirements:
120 V AC, 60 Hz

Data Requirements:
1 data port

Design and Installation Notes:

- UPS power is required

This information is provided for planning purposes only and is not to be relied upon. Final installation specifications are dependent upon selected supplier's shop drawings.



Item Description
Ventilator, Transport

Equipment Number
18-098

Manufacturer Pulmonetic Systems	Model Number LTV 1200
----- Pulmonetic Systems	----- 10900 (External Battery Kit)
-----	-----

Further Description:

Ventilator Type:

- Positive Pressure
- Invasive Modes:
 - Volume-controlled modes --- ASSIST/CONTROL SIMV (PSV)
 - Pressure-controlled modes --- ASSIST/CONTROL SIMV (PSV) CPAP
- Non-Invasive Modes:
 - Volume-controlled modes: ASSIST/CONTROL SIMV SPONT. Pressure-controlled modes: ASSIST/CONTROL SIMV SPONT
- Conventional

3-Hour External Battery Kit (soft bag) includes:

- P/N 11475, Battery, 12 Volt, 12 Amp Hr
- P/N 11330, Padded Battery Bag with Cable
- P/N 10801, External Battery Charger
- P/N 10802, External Battery DC Cord



Specifications:

Operating Range of Controls

• Breath Rate:	0 to 80 BPM
• Tidal Volume:	50 to 2000 ml
• Inspiratory Time:	0.3 to 9.9 sec
• Pressure Control:	1 to 99 cmH2O
• Pressure Support:	Off, 1 to 60 cmH2O
• Sensitivity:	Off, 1 to 9 lpm
• % O2: High pressure source:	21% to 100%
• Bias Flow:	10 lpm during exhalation
• PEEP/CPAP:	0 to 20 cmH2O

Alarms

- Alarm Silence/Reset: 60 seconds
- High Pressure Audible Alarm Delay: No Delay, 1 Breath, 2 Breaths

Alarm Controls

- Apnea Interval: 10 to 60 seconds
- High Pressure Limit: 5 to 100 cmH2O
- Low Peak Pressure: Off, 1 to 60 cmH2O
- Low Minute Volume: Off, 0.1 to 99 liters
- Alarm Volume: 60 to 85 dBA at 1 meter

Installation considerations:

- Weight: 6.5 Kg
- Dimension: H x W x L (Cm) 8.4 x 27 x 38

Supporting Documents:

Product: Literature [1](#) [2](#)

This information is provided for planning purposes only and is not to be relied upon. Final installation specifications are dependent upon selected supplier's shop drawings.



Equipment Datasheet

Item Description Radiographic Unit, Ultrasound, Portable	Equipment Number 18-143
---	----------------------------

Potential Manufacturer ----- Sonosite ----- GE ----- BARD	Model Number ----- M-Turbo ----- LOGIQ e ----- Site rite
---	--

Further Description:

- Multi disciplinary use point of care ultrasound: Cardiac, OB/Gyn/Fertility, Vascular comes in laptop style or docking station cart



Specifications:

Dimensions and weight:
Logic e: W x D x H: 350 x 375 x 100 mm
Weight: 6 kg

Site Rite 6 with GCX roll -stand:
W x D x H: 640 x 640 x 1730 mm
Weight: 70 kg

Electrical Requirements:
100-240 VAC, 50/60 Hz, 130 VA

Data Requirements
1 data port, wireless connectivity

Design and Installation Notes:

This information is provided for planning purposes only and is not to be relied upon. Final installation specifications are dependent upon selected supplier's shop drawings.



Item Description: Sterilizer, Low Temperature	Equipment Number: 18-146
---	------------------------------------

Potential Manufacturer ----- TSO3 ----- STERRAD (ASP) ----- Getinge	Model Number ----- Sterizone ----- 100NX ----- Sterizone
--	---

Further Description:

- Low temperature surgical instrument sterilizer with touch-screen with display area for programming the sterilization cycles

Specifications:

Dimensions and weight:
W x D x H: 780 x 1250 x 1930 mm
Weight: 730 kg

Electrical Requirements:
208 V AC, Single phase, 60 Hz, 30 A

Data Requirements:
1 Data port

Plumbing Requirements:
Oxygen: Required
Compressed Air: Required



Design and Installation Notes:

- Adequate ventilation is required
- Oxygen inlet is located on the top of the sterilizer
- Might be used in a
- Complex integrated equipment installation, final selected vendor direction are required prior to installation

This information is provided for planning purposes only and is not to be relied upon. Final installation specifications are dependent upon selected supplier's shop drawings.



Sterizone install illustrations samples:

Installation Illustrations

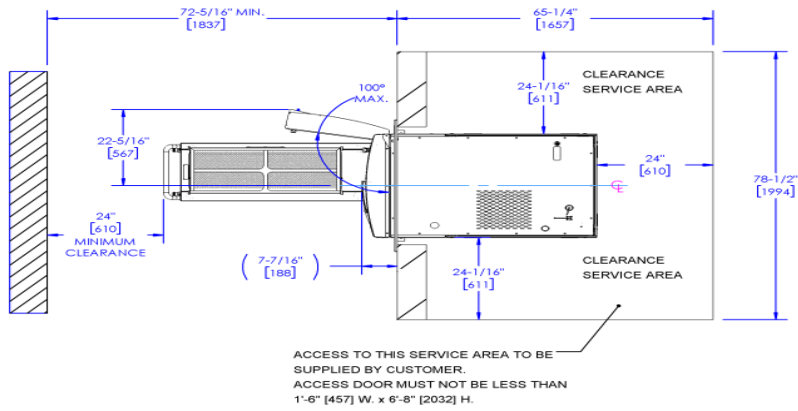
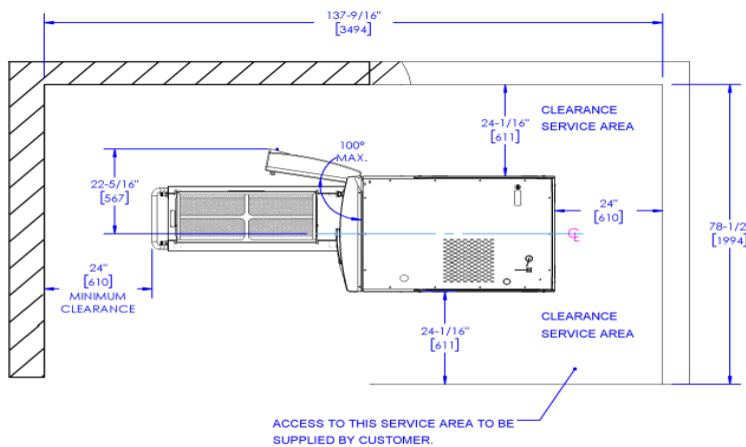


Figure 2-4. Recessed Installation with Clearance Area (Top View)

Installation Illustrations



Note: With the addition of the Service Space Clearance Removal Kit (RAM-900-172), the 24 inches of service space at the back of the sterilizer (shown above) is not needed.

Figure 2-2. Freestanding Installation Clearance Area (Side View)

This information is provided for planning purposes only and is not to be relied upon. Final installation specifications are dependent upon selected supplier's shop drawings.



Item Description:
Automated Medication Dispensing System

Equipment Number:
18-167

Potential Manufacturer:

Omni Cell

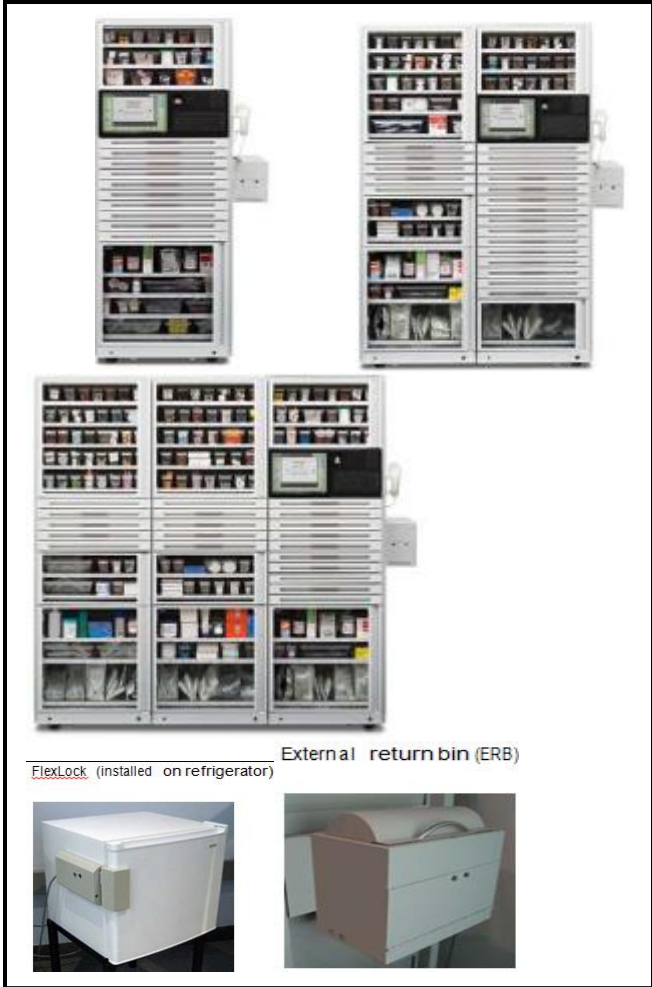
Model:
One-Cell XT

Two-Cell XT

Three-Cell XT

Further Description:

- Automated networked medication dispensing system with multiple security features to increase the efficiency and comply with standard regulations



Specifications:

Dimensions and weight:

One-Cell (Without return bin)
W x D x H: 700 x 690 x 1970 mm
Weight: 250 Kg (empty)

Two-Cell (Without return bin)
W x D x H: 1320 x 690 x 1970 mm
Weight: 370 Kg (empty)

Three Cell (Without return bin)
W x D x H: 1950 x 690 x 1970 mm
Weight: 485 Kg (empty)

External Return Bin: 340 x 210 x 340 mm (25 Kg)
Flex lock (on the fridge): 310 x 160 x 80 mm (10 Kg)

- 210 mm must be added to the width when installed to the side of the Omni

Electrical Requirements:

120 V AC, 60 Hz, 1-Phase, 7 A

Data Requirements:

1 Data Port

Design and Installation Notes:

- Location of Power Outlet to be above the Omnicell
- Data Port to be located above the Omnicell
- Adequate seismic restraint is required
- Adequate width clearance is required for accessing the flex lock and the return bin
- When the equipment mounted in its place, adequate clearance is required for accessing the back side of the equipment for service purposes

This information is provided for planning purposes only and is not to be relied upon. Final installation specifications are dependent upon selected supplier's shop drawings.



Item Description:
Automated Medication Dispensing System

Equipment Number:
18-167

Potential Manufacturer: ----- Omni Cell ----- -----	Model: ----- Half-Cell Touch XT ----- -----
--	--

Further Description:

- Automated networked medication dispensing system with multiple security features to increase the efficiency and comply with standard regulations



Specifications:

Dimensions and weight:

Half-Cell (Without return bin)
W x D x H: 710 x 680 x 1470 mm
Weight: 240 Kg (empty)

External Return Bin: 340 x 210 x 340 mm (25 Kg)
Flex lock: 310 x 160 x 80 mm (10 Kg)

- 210 mm must be added to the width when installed to the side of the Omni

Electrical Requirements:

120 V AC, 60 Hz, 1-Phase, 6.3 A

Data Requirements:

1 Data port

Design and Installation Notes:

- Location of Power Outlet to be above the Omnicell
- Data Port to be located above the Omnicell
- Adequate seismic restraint is required
- Adequate width clearance is required for accessing the flex lock and the return bin
- When the equipment mounted in its place, adequate clearance is required for accessing the back side of the equipment for service purposes

This information is provided for planning purposes only and is not to be relied upon. Final installation specifications are dependent upon selected supplier's shop drawings.

Item Description
Automated Medication Dispensing System Anesthesia Workstation

Equipment Number
18-167.2

Potential Manufacturer

Omni Cell

Model

Anesthesia Workstation

Further Description:

- High capacity anesthesia cabinet with quick biometric access to medications. Stores a full day's worth of medications Automates reconciliation of controlled substances, eliminating countbacks



Specifications:

Dimensions and weight:

Anesthesia Workstation: W x D x H: 1630 x770 x 1620 mm
Note: Width stated is with the user interface arm extended

Weight: 260 Kg (empty)

Electrical Requirements:

120 V AC, 60 Hz, 1-Phase, 10 A

Data Requirements:

2 data port

Installation Considerations:

- UPS power is required

This information is provided for planning purposes only and is not to be relied upon. Final installation specifications are dependent upon selected supplier's shop drawings.



Item Description
Lasers, Carbon Dioxide

Equipment Number
18-203

Potential Manufacturer ----- Lumenis ----- -----	Model Number ----- Ultra Pulse ----- -----
--	--

Further Description:

- Medical laser that can access difficult-to-reach tissue with touch screen transition between fiber and free beam modalities



Specifications:

Dimensions and weight:
W x D x H: 340 x 510 x (1440-1950) mm
Weight: 130 kg

Electrical Requirements:
220 V AC, 60 Hz, 20 A

Data Requirements:
1 Data port

Design and Installation Notes:

This information is provided for planning purposes only and is not to be relied upon. Final installation specifications are dependent upon selected supplier's shop drawings.



Equipment Datasheet

Item Description
Microscope, Light, Operating, Ophthalmology

Equipment Number
18-288

Manufacturer	Model Number
Zeiss	OPMI Lumera

Further Description:

.

Performance Specification:

Electrical:	
Data:	
Plumbing:	
Venting:	
Backing:	
Dimensions:	
Weight:	

anatomical

Instant illumination
Stereo (SCI) eye cataract

Integrated
xenon
you to
of the
and hig

Deep
manag
you to
maxim
optimu

nt microscope.
ation are selected
the surgeon's
e assistance.

ing with magnetic
smoothly glides
. When locked,
ope remains firmly

This information is provided for planning purposes only and is not to be relied upon. Final installation specifications are dependent upon selected supplier's shop drawings.



OPMI Lumera T from ZEISS
Excellence in illumination





ZEISS OPMI Lumera T

Shedding light on the details for better decision making

The OPMI LUMERA® family from ZEISS represents excellence in optics and illumination. The ZEISS OPMI Lumera T with ZEISS high-quality visualization technology, including Stereo Coaxial Illumination (SCI), will make a difference in how well you see the details during cataract and retina surgery.

- See the most minute structures during surgery
- Identify the details of the retina
- See overlays of the live image in the eyepiece with the External Data Injection System (EDIS)
- Manage depth of field with a push of the button
- View structures in the eye in natural colors



The 1Chip HD camera system with an integrated monitor for viewing videos provides excellent visualization of natural color renditions and crisp anatomical details.

Unmatched ZEISS optics for exceptional clarity, contrast and light.

RESIGHT® from ZEISS provides a clear, detailed view of the retina.

Instant Red Reflex brightly illuminates the eye – due to Stereo Coaxial Illumination (SCI) even with mature cataracts.

Integrated Superlux® eye xenon illumination allows you to view the structure of the eye in natural colors and high detail.

Deep View depth of field management system allows you to choose between maximum depth of field or optimum light transmission.

Integrated assistant microscope. Focus and magnification are selected independently from the surgeon's view, enabling active assistance.

Effortless positioning with magnetic brakes. The system smoothly glides into a new position. When locked, the surgical microscope remains firmly in place.



Cataract surgery

For cataract surgery, SCI and CALLISTO eye® from ZEISS provide excellent anterior visualization and highly precise^{1,2,3} assistance functions to accelerate procedural workflow and improve surgical accuracy.

Superior red reflex

With the now firmly established Stereo Coaxial Illumination (SCI) and renowned ZEISS optics, ZEISS OPMI Lumera T brings even the most minute anatomical structures clearly into view. Its highly stable, high-contrast red reflex further enhances detail recognition.

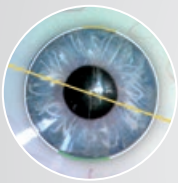
See assistance functions in the eyepiece

Combined with the ZEISS CALLISTO eye, ZEISS OPMI Lumera T provides a series of assistance functions for performing precise^{1,2,3} LRI incisions, capsulorhexis, IOL centration and toric IOL alignment. All assistance functions are injected directly into the eyepiece via EDIS (External Data Injection System) as high-resolution, high-contrast images

and controllable with the wireless foot control panel. This allows you to work comfortably and with full concentration without needing to look up from the eyepiece.

The high-quality HD images and videos can also be displayed on the ZEISS CALLISTO eye touch screen and recorded for documentation.

Assistance functions in the eyepiece



Incision/LRI assistant

Superimpose the exact position and size of the incisions to ensure precise^{1,2,3} surgery.



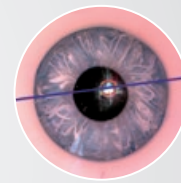
Rhexis assistant

Superimpose the exact shape and size of the capsulorhexis and center the IOL along the optical axis of the patient's eye.



Z ALIGN® – toric assistant

Inject reference axis and target axis in your microscope eyepiece to ensure precise^{1,2,3} toric IOL alignment without corneal markers.



K TRACK®

Visualize corneal curvature in combination with a keratoscope, e. g. in corneal transplantations.

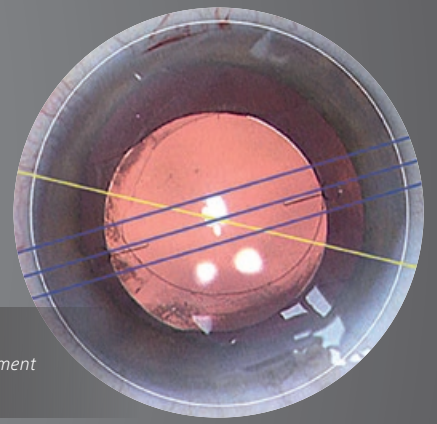
¹ Clinical data of Prof. Findl/Dr. Hirsnschall presented at ESCRS 2013 – technically verified pre-/intraoperative matching precision $\pm 1.0^\circ$ in mean

² Lackerbauer, C. Modern Solutions for Refractive Cataract Surgery: CALLISTO eye. *Cataract & Refractive Surgery Today*. February 2013.

³ Findl, O. Complications of the CCC. *Cataract & Refractive Surgery Today Europe*. March 2012



> **Visualize all the details**
Clearly recognize different structures of the anterior segment with SCI



> **Aligned just right**
Precise^{1,2,3}, markerless alignment of toric IOLs with Z ALIGN

Skip unnecessary workflow steps

The ZEISS OPMI Lumera T is an integral part of the ZEISS Cataract Suite markerless – products designed to work together for precise^{1,2,3} and fast toric IOL alignment. You can skip manual pre- and intraoperative marking steps and manual data transfer; thereby providing a higher level of comfort for you and your patients.



ZEISS CALLISTO eye
Precise^{1,2,3} premium IOL surgery made easy



Retina surgery

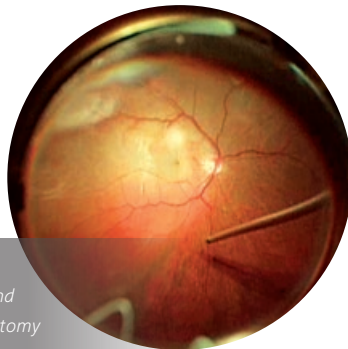
ZEISS OPMI Lumera T and ZEISS RESIGHT fundus viewing systems allow you to clearly recognize the details of the retina.



ZEISS RESIGHT Family provides excellent optical quality⁴

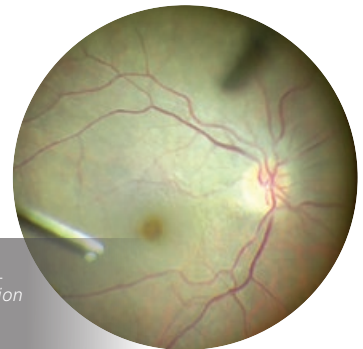
The non-contact fundus viewing systems provide a clear, detailed visualization of the retina. ZEISS RESIGHT 500 and RESIGHT 700 incorporate varioscope optics from ZEISS to keep you focused on the retina, without moving the microscope. The innovative lens turret, equipped with two aspheric lenses

128D and 60D, lets you quickly switch to a second lens and magnification. If contact is accidentally made with the patient eye, the system automatically folds up. Because only sterile parts need to be changed, the optics can remain on the surgical microscope in preparation for the next patient. It's that easy.



> 128D wide-field lens

For peripheral visualization and a clear overview during vitrectomy



> 60D macular lens

For high magnification of the macula

Full workflow efficiency

Automated workflow

When ZEISS RESIGHT 700 is used, the surgical microscope automatically adjusts the Invertertube™ E settings.



Turn the world upside down

The Invertertube E combines ZEISS optics and optical inverters into a single ergonomic design that supports a comfortable, upright working posture, without adding to stack height.



Foot control freedom

The foot control panel offers positioning flexibility and the ability to configure functions based on preferences.

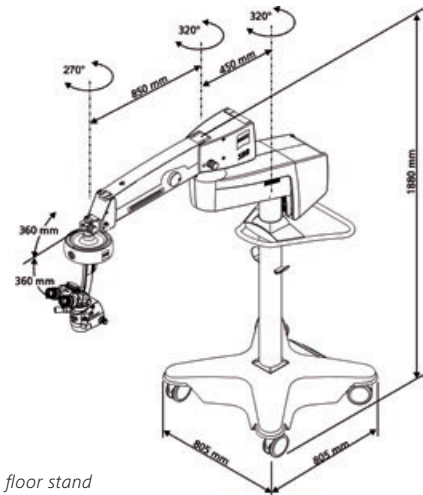
⁴2nd-generation optics with clearly better overall optical quality and clearly better sharpness, depth and detail recognition for use with the 60D lens – 2013 internal clinical customer survey with international key opinion leader surgeons

Technical specifications

S88 / ZEISS OPMI Lumera T

Technical data

Surgical microscope	<p>Apochromatic optics</p> <p>Motorized zoom system, 1:6 zoom ratio, magnification factors = 0.4 to 2.4</p> <p>Focusing range: 50 mm</p> <p>Binocular tube: Invertertube® (optional 0-180° tiltable tube)</p> <p>Eyepieces: 10x (12.5x optional)</p> <p>Objective lens f = 200 mm (f = 175 mm optional)</p> <p>DeepView: depth of field management system</p> <p>Integrated assistant's microscope</p> <p>Fully Stereoscopic</p>
Illumination	<p>SCI: red reflex illumination and surrounding field illumination, both dimmable, patent pending</p> <p>Retinal protection device</p> <p>Fiber optic illumination</p>
Light source	<p>Superlux Eye xenon Light Source with manual bulb change</p> <p>HaMode filter</p> <p>Optional: 12V, 100W halogen Light Source with fully automatic bulb change in case of lamp failure</p> <p>Option: dual halogen Light Source</p> <p>Optional: xenon / halogen combi Light Source</p> <p>Integrated 408 nm UV barrier filter</p> <p>Blue-blocking filter</p> <p>Optional: fluorescence filter</p>
X-Y coupling	<p>40 mm x 40 mm adjustment range</p> <p>Button for starting positions of the X-Y coupling and focus</p>
Weight	<p>13.7 kg (30.2 lb) (with Invertertube, integrated assistant's microscope, objective lens and eyepieces)</p>
Suspension system	<p>S88 floor stand</p> <p>Maximum load: 20 kg (44.1 lb) (complete microscope equipment, including accessories)</p>



S88 floor stand



OPMI Lumera T
RESIGHT 500
RESIGHT 700
EDIS



0297
CALLISTO eye
IOLMaster 500
IOLMaster 700



Carl Zeiss Meditec AG
Goeschwitzer Strasse 51–52
07745 Jena
Germany
www.zeiss.com/med/contacts
www.zeiss.com/meditec

EN_32_010_010211

The contents of the brochure may differ from the current status of approval of the product or service offering in your country. Please contact our regional representatives for more information. Subject to changes in design and scope of delivery and due to ongoing technical development. OPMI LUMERA, RESIGHT, CALLISTO eye, Superlux, Invertertube, Z ALIGN and K TRACK are either trademarks or registered trademarks of Carl Zeiss Meditec AG. Printed on elemental Chlorine-free bleached paper.
© Carl Zeiss Meditec AG, 2016. All rights reserved.



Equipment Datasheet

Item Description
Monitor, Physiologic, Fetal, Intrapartum

Equipment Number
18-340

Potential Manufacturer	Model Number
-----	-----
Philips	Avalon FM
-----	-----
GE	Corometrics cx
-----	-----

Further Description:

- A patient care monitor which used to monitor maternal and fetal vital signs Parameters

Specifications:

Dimensions:

Mobile Fetal Monitor:
W x D x H: 560 x640 x 1270 mm

Electrical Requirements:

120VAC, 60 Hz

Data Requirements:

2 Data port
Wireless network availability



Design and Installation Notes:

- Backing is required if wall mounted
- UPS power is required

This information is provided for planning purposes only and is not to be relied upon. Final installation specifications are dependent upon selected supplier's shop drawings.



Item Description
Table, Examination

Equipment Number
18-374.1

Potential Manufacturer ----- Midmark ----- -----	Potential Model Number ----- 223 ----- -----
---	---

Further Description:

- With unprecedented low and high positioning heights, has powerback system
- Have builtin pillow
- Hideaway stirrups that lock in one of four lateral positions
- Foot extension shelf to expand the table length
- Paper roll holder hidden under headrest
- Storage for four 21" x 3.5" diameter paper rolls
- Polystyrene treatment pan
- Foot control
- Exam Assistant Drawer System™ and leveling screws

Options

- Seamless upholstery top 28.5" W x 59" L (72.4 x 149.9 cm)
- Pelvic tilt (5 degrees)
- Drawer heater (35 watt)

Accessories

- Rear storage pod (includes removable divider) (45.2 x 17.8 x 24.8 cm high)
- Adjustable arm system (right and left side arms included)
- Factory installed only Knee crutches Procto rest
- Welch Allyn® light bracket
- Urology pan
- Stainless steel pan



Specifications:

- Length w/ footrest extended: 76" (182.9 cm)
- Height: Min 18" (45.7 cm) Max 37" (94.0 cm)
- Patient weight capacity 400# (181.4 kg)

Electrical

- 115 VAC, 12 Amps (with receptacle –015)
- 115 VAC, 12.5 Amps (with heater & receptacle – 016)
- UL 60601-1 and CAN/CSA C22.2 60601.1-M90

Installation Considerations:

- Electrical receptacle on left side (115 VAC 5 AMPS Max.)
- Consider space for Drawer to be opened
- Power cord at the head of the bed
- Floor mounting may be required

This information is provided for planning purposes only and is not to be relied upon. Final installation specifications are dependent upon selected supplier's shop drawings.



Item Description:
Bed, Mechanical, Cradle, Pediatric

Equipment Number:
18-392

Potential Manufacturer

Stryker

Stevens

Model Number

Further Description:

- Height adjustable pediatric crib with retracting backrest, slatted siderails, and optional Protective Top



Specifications:

Dimensions and weight:
W x D x H: 950 x 1840 x 1020 mm
Weight: 85 kg

Electrical Requirements:
120 V AC, 60 Hz, 5A

Design and Installation Notes:

This information is provided for planning purposes only and is not to be relied upon. Final installation specifications are dependent upon selected supplier's shop drawings.



Item Description Wheelchair, General Transport	Equipment Number 18-407
--	-----------------------------------

Potential Manufacturer ----- Invacare ----- Staxi -----	Model Number ----- ----- Stackable wheelchair -----
--	--

Further Description:

- Wheel chairs with durable frame that can come as stackable or non-stackable, with multiple frame color variations for customizing options available



Specifications:

Dimensions and weight:

Regular wheelchair:
W x D x H: 770 x 770 x 1020 mm
Weight: 20 kg

Stackable wheelchair:
W x D x H: 770 x 1050 x 1030 mm
Weight: 30 Kg

Design and Installation Notes:

This information is provided for planning purposes only and is not to be relied upon. Final installation specifications are dependent upon selected supplier's shop drawings.

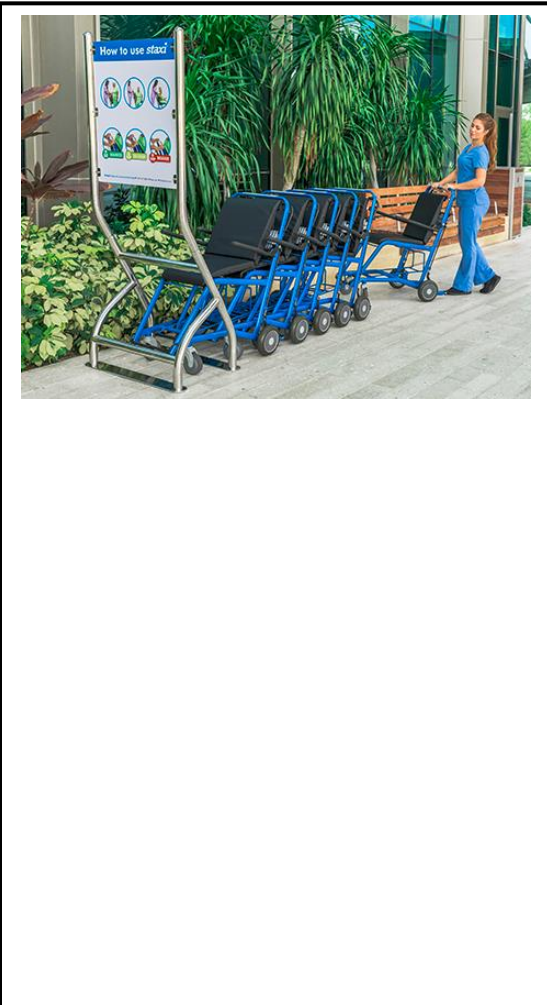


Item Description Wheelchair, Docking Station, general transport	Equipment Number 18-407.1
---	-------------------------------------

Potential Manufacturer ----- Staxi ----- Invacare -----	Model Number ----- Docking Station ----- -----
--	---

Further Description:

- A station that is used to dock the stackable transport wheelchairs



Specifications:

Dimensions:

1 chair: w x d: 820 x 1080 mm
 2 chairs: w x d: 820 x 1420 mm
 3 chairs: w x d: 820 x 1760 mm
 5 Chairs: w x d: 820 x 2360

Design and Installation Notes:

- Floor mounting for the docking station is required

This information is provided for planning purposes only and is not to be relied upon. Final installation specifications are dependent upon selected supplier's shop drawings.

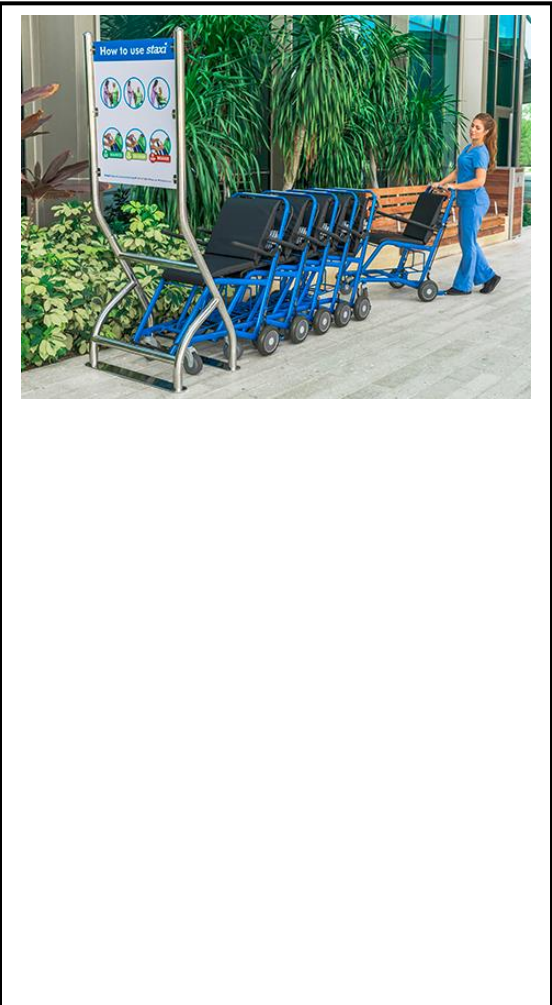


Item Description Wheelchair, Docking Station, general transport	Equipment Number 18-407.1
---	-------------------------------------

Potential Manufacturer ----- Staxi ----- Invacare -----	Model Number ----- Docking Station ----- -----
--	---

Further Description:

- A station that is used to dock the stackable transport wheelchairs



Specifications:

Dimensions:

1 chair: w x d: 820 x 1080 mm
 2 chairs: w x d: 820 x 1420 mm
 3 chairs: w x d: 820 x 1760 mm
 5 Chairs: w x d: 820 x 2360

Design and Installation Notes:

- Floor mounting for the docking station is required

This information is provided for planning purposes only and is not to be relied upon. Final installation specifications are dependent upon selected supplier's shop drawings.



Item Description
Radiographic/Fluoroscopic Units, C-Arm, Mini

Equipment Number
18-435

Potential Manufacturer ----- Hologic ----- Orthoscan -----	Model Number ----- ----- -----
---	---

Further Description:

- A small portable fluoroscopy C-arm device with flat-panel touch screen monitor folds, extends, and swivels for surgical viewing

Specifications:

Dimensions and weight:
W x D x H: 790 x 1010 x 1470 mm (retracted)
Weight: 180 Kg

Electrical Requirements:
120 V AC, 60 Hz



Design and Installation Notes:

This information is provided for planning purposes only and is not to be relied upon. Final installation specifications are dependent upon selected supplier's shop drawings.



Item Description:
Smoke Evacuation Systems, Surgical, Mobile/Portable

Equipment Number:
18-855

Potential Manufacturer ----- Covidian/Valley Lab ----- Buffalo -----	Model Number ----- RapidVac ----- VisiClear -----
---	--

Further Description:

- Quiet surgical procedures smoke evacuation machine comes with fluid collection option, can be cart or boom mounted based on operational needs ,



Specifications:

Dimensions and weight:
W x D x H: 360 x 480 x 210 mm
Weight: 10 kg

Electrical Requirements:
120 V AC, 60 Hz, 10 A

Design and Installation Notes:

- UPS power is required

This information is provided for planning purposes only and is not to be relied upon. Final installation specifications are dependent upon selected supplier's shop drawings.