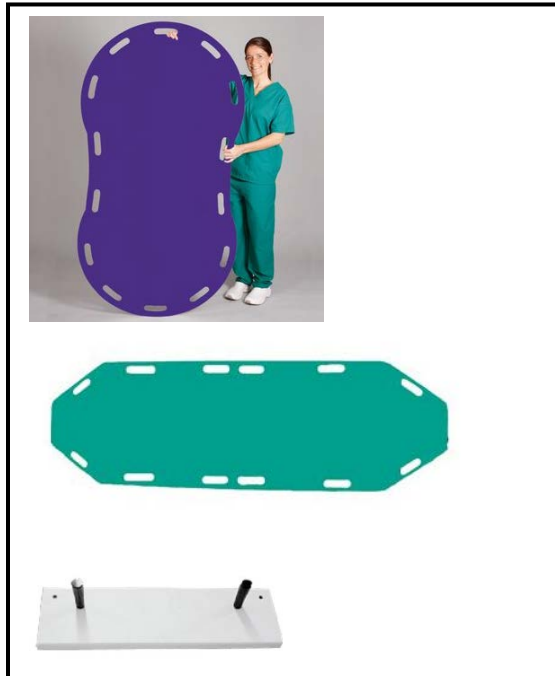


Item Description  
Boards, Patient Transfer

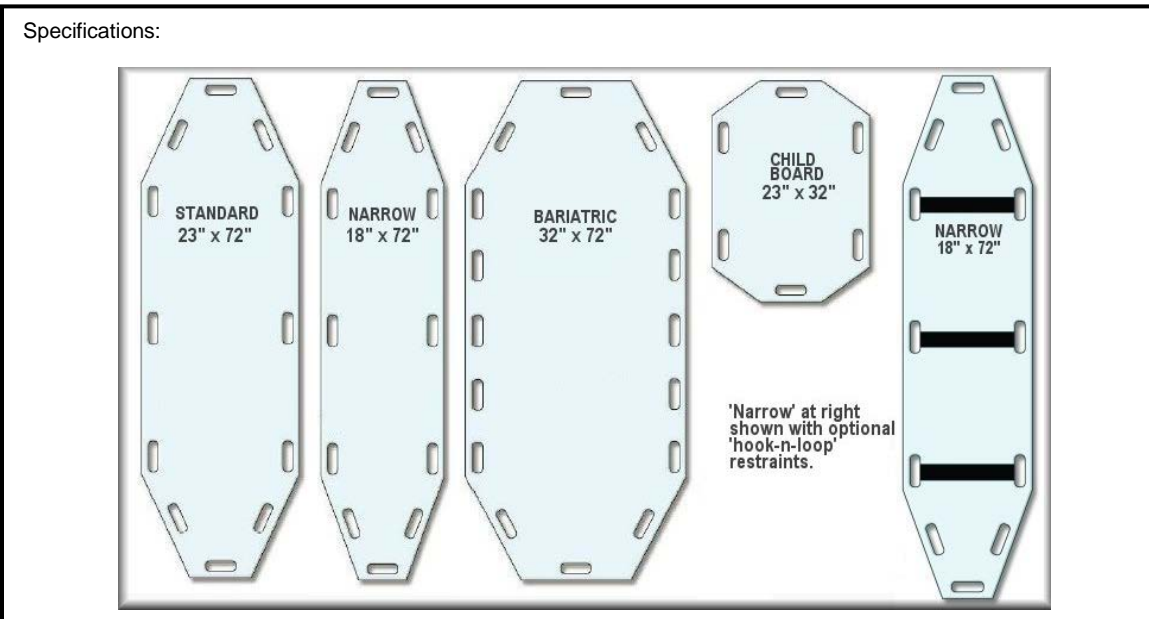
Equipment Number  
19-014

Manufacturer ----- <b>BK Medical</b> ----- -----	Model Number ----- <b>Flex Focus</b> ----- -----
--	--

- Further Description:
- Infection control approved
  - Metallic or SS hanger (no wood)
  - Different colors
  - Slides on a bed sheet or stretcher pad.
  - Slippery coating protects the patient from sticking to the shifter.
  - polyethylene board has built-in handles for convenient positioning.
  - semi-rigid shifter bridges uneven gaps.
  - 400 lbs. weight capacity.



- Installation Considerations:
- Wall mounted



This information is provided for planning purposes only and is not to be relied upon. Final installation specifications are dependent upon selected supplier's shop drawings.



Item Description:  
**Patient Lift, Ceiling Rail System**

Equipment Number:  
**19-015**

Potential Manufacturer	Model
----- Guldmann -----	----- ----- -----
----- Prism Medical (Handicare) -----	----- ----- -----

**Further Description:**

- Rail mounted patient lift motor that meet or exceed the healthcare standards including emergency stop and emergency power lowering on the lift and comes with in rail charging option



**Specifications:**

**Dimensions and weight:**

W x D x H: 360 x 260 x 190mm (motor only dimensions)

Weight: 11.5 Kg (motor), 19.5 Kg (hoist)

**Electrical Requirements:**

120 V AC, 3 A

**Design and Installation Notes:**

- Requires electrical outlet at ceiling
- DB provide Rails, Charger and in rail charging solution as per SoR; the authority only provide motors as required.

This information is provided for planning purposes only and is not to be relied upon. Final installation specifications are dependent upon selected supplier's shop drawings.



Item Description:  
**Stretcher, Gynecology**

Equipment Number:  
**19-021.2**

Potential Manufacturer ----- Stryker ----- Amico ----- Hill-Rom	Model Number ----- Gynnie OB/GYN ----- Titan OB/GYN Stretcher ----- OB/GYN Stretcher
---	--

**Further Description:**

- A stretcher with OB/GYN optional accessories to meet clinical needs



**Specifications:**

**Dimensions:**  
W x D x H: 910 x 2130 x (610-940) mm

**Electrical**  
120 V AC, 60 Hz

**Design and Installation Notes:**

This information is provided for planning purposes only and is not to be relied upon. Final installation specifications are dependent upon selected supplier's shop drawings.



Item Description  
**Stretcher/Chairs, Mobile**

Equipment Number  
**19-024**

Potential Manufacturer ----- TransMotion ----- Stryker -----	Model Number ----- TMM4 ----- Procedural Stretcher -----
---	---

**Further Description:**

- Height adjustable stretcher that can transform into chair for flexibility of use to meet clinical treatment needs, comes with eight button handheld pendant controls positioning of backrest, leg section and height adjustment



**Specifications:**

**Dimensions:**  
W x D x H: 840 x 1960 x 990 mm

**Electrical Requirements:**  
120 V AC, 60 Hz

**Design and Installation Notes:**

This information is provided for planning purposes only and is not to be relied upon. Final installation specifications are dependent upon selected supplier's shop drawings.



Item Description: <b>Monitor, Central, Physiological</b>	Equipment Number: <b>20-179</b>
---	------------------------------------

Potential Manufacturer ----- <b>Philips Medical Systems</b> ----- <b>GE</b> -----	Model Number ----- <b>IntelliVue Information Centre</b> ----- <b>CIC Pro Central station</b> -----
--	---

**Further Description:**

- Central Station surveillance system with continuous display of patient waveforms, including 2 large, flat panel displays for display of desired parameters from the bedside monitor



**Specifications:**

**Dimensions and weight:**

21.5" monitor with stand:  
W x D x H: 520 x 180 x 400 mm  
Computer tower: Variable depends on the equipment selection  
Weight: ~15 kg

**Electrical Requirements:**

120 V AC, 50/60 ± 3 Hz, 5 A  
Multiple outlets

**Data Requirements:**

3 Data ports, wireless network connectivity

**Design and Installation Notes:**

- Wall backing is required if wall mounted
- UPS power is required
- A conduit between the

This information is provided for planning purposes only and is not to be relied upon. Final installation specifications are dependent upon selected supplier's shop drawings.



Item Description  
Cabinets, Storage, Endoscope

Equipment Number  
20-597

Potential Manufacturer	Model Number
-----	-----
Olympus	-----
-----	-----
SciCan	-----
-----	-----
Steris	

**Further Description:**

- Cabinets used to store endoscopes safely



**Specifications:**

**Dimensions and weight:**  
W x D x H: 920 x 480 x 2370 mm  
Weight: 110 kg

**Electrical Requirements:**  
120 V AC, 60 Hz

**Design and Installation Notes:**

- Wall backing is required
- Adequate seismic restraint is required
- Electrical outlet to be located above the top of the unit

This information is provided for planning purposes only and is not to be relied upon. Final installation specifications are dependent upon selected supplier's shop drawings.



## Equipment Datasheet

Item Description <b>Biological Safety Cabinet, IIB2</b>	Equipment Number <b>20-653</b>
--	-----------------------------------

Manufacturers ----- <b>The Baker Company / Labconco / NuAire</b> -----	Model ----- <b>Sterilchemguard SG603ATX</b> -----
---	--

<p>Further Description</p> <ul style="list-style-type: none"> <li>• Containment</li> <li>• Particulates: Personnel, Product, Environment</li> <li>• Vapors and Gases: Personnel, Environment (if exhausted, treated)</li> <li>• Performance</li> <li>• Face Velocity: 105 FPM</li> <li>• Recirculated Air %: 0</li> <li>• Exhausted Air %: 100</li> <li>• Exhaust</li> <li>• Contaminated Pressure Plenum: Negative</li> <li>• Exhaust Source: Direct</li> <li>• Exhaust Destination: Outside</li> <li>• Exhaust Connection: Hard</li> <li>• Exhaust CFM: 1150</li> <li>• Inches Of Water (Column):</li> <li>• Filter</li> <li>• HEPA Supply Filter(s): Above Work Area</li> <li>• HEPA Exhaust Filter: Yes</li> <li>• Features</li> <li>• StediVOLT: Yes</li> <li>• UniPressure: Yes</li> <li>• Stand: Standard</li> </ul>
---



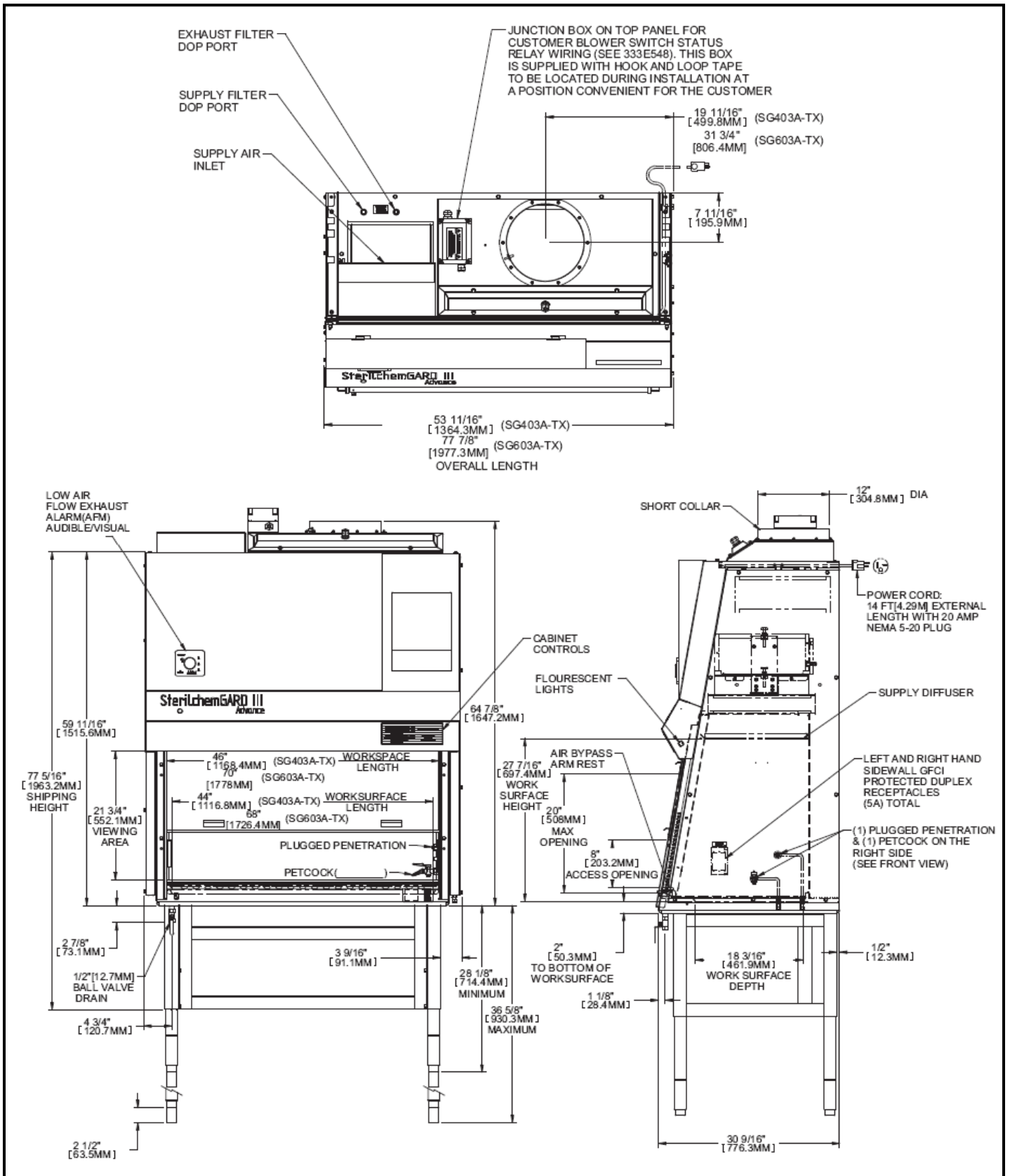
<p>Specifications:</p> <ul style="list-style-type: none"> <li>• Exterior Dimensions: Overall Size: 77-5/8 inches (1972 mm) wide, 30-9/16 inches (776 mm) deep, 100-7/8 inches (2562 mm) high (maximum height with stand at full-height position).</li> <li>• Net Weight: 800; Ship Weight: 1000</li> <li>• Electrical <ul style="list-style-type: none"> <li>○ Volts: 115V, 7.8A, 897W</li> <li>○ Total Amps: 12.4</li> <li>○ 20A Dedicated NEMA 5-20P (14' Cord)</li> </ul> </li> <li>• BTU/HR: 3063</li> </ul>
--

<p>Installation considerations:</p> <ul style="list-style-type: none"> <li>• 100% External ventilation</li> <li>• Duct Diameter: 12 "</li> <li>• Sash Height 8"</li> <li>• Exhaust flow (CFM): 1000-1150</li> <li>• Pressure Requirement (wc) <ul style="list-style-type: none"> <li>○ Clean 1.3"</li> <li>○ 50% Load 2"</li> </ul> </li> <li>• Should have a dedicated exhaust. If shared must be non-recirculation</li> <li>• The entire duct system must be negatively pressured all the way to the external exhaust</li> <li>• Possible UPS required</li> <li>• Possible Horizontal Extraction</li> <li>• Possible connection of the sink to a drain system</li> <li>• Should be away from doors, windows and people traffic</li> </ul>
---

This information is provided for planning purposes only and is not to be relied upon. Final installation specifications are dependent upon selected supplier's shop drawings.



# Equipment Datasheet



Final installation specifications are dependent upon selected supplier's shop drawings.





**fraserhealth**

Better health.  
Best in health care.

# Equipment Datasheet

Item Description:  
Ventilators, Noninvasive Positive Pressure

Equipment Number:  
20-746

Potential Manufacturer ----- Respironics ----- Respironics v60 -----	Model Number ----- Remstar ----- -----
---	--

**Further Description:**

- Portable non-invasive ventilator with high flow oxygen therapy



**Specifications:**

**Dimensions:**

W x D x H: 280 x180 x 110 mm

**Electrical Requirements:**

120 V AC, 60 Hz

**Design and Installation Notes:**

This information is provided for planning purposes only and is not to be relied upon. Final installation specifications are dependent upon selected supplier's shop drawings.

This page is also available in [Canada \(English\)](#)



# Respironics V60

Ventilator

NOCTN96 [Find similar products >](#)



Item Description <b>Washer-Decontamination Unit, Surgical Instrument</b>	Equipment Number <b>21-171</b>
---	-----------------------------------

Potential Manufacturer ----- <b>Steris</b> ----- <b>Getinge</b> -----	Model ----- ----- -----
--	----------------------------------

**Further Description:**

- Single-Chamber Washer/Disinfector is a mechanical washer equipped with multi stage control system.

**Specifications:**

**Dimensions and weight:**

Steris: W x D x H: 1100 x 820 x 2060 mm  
Weight: 540 kg

**Electrical Requirements:**

208 V AC, 60 Hz, 3 Phase, 40 A

**Data Requirements:**

1 Data port

**Plumbing Requirements:**

Water: Required (Hot and Cold)  
Drain: Required  
Steam: required  
RO water system required  
Compressed Air required  
Drain required  
Exhaust and ventilation required  
Condense Return is required  
Central Soap system is required



**Design and construction Notes:**

- Pass through equipment
- Seismic restrain is required
- Complex equipment installation, final selected vendor instructions are required prior to installation

This information is provided for planning purposes only and is not to be relied upon. Final installation specifications are dependent upon selected supplier's shop drawings.



## Equipment Datasheet

Item Description Heat sealer
---------------------------------

Equipment Number 21-897.1
------------------------------

Manufacturer ----- See attached specs ----- -----	Model Number ----- ----- -----
---	---

Further Description:



Specification:

- Weigh:
- Dimensions:
- 

This information is provided for planning purposes only and is not to be relied upon.  
Final installation specifications are dependent upon selected supplier's shop drawings.

# LIFT SEAL™

## Heat Sealer

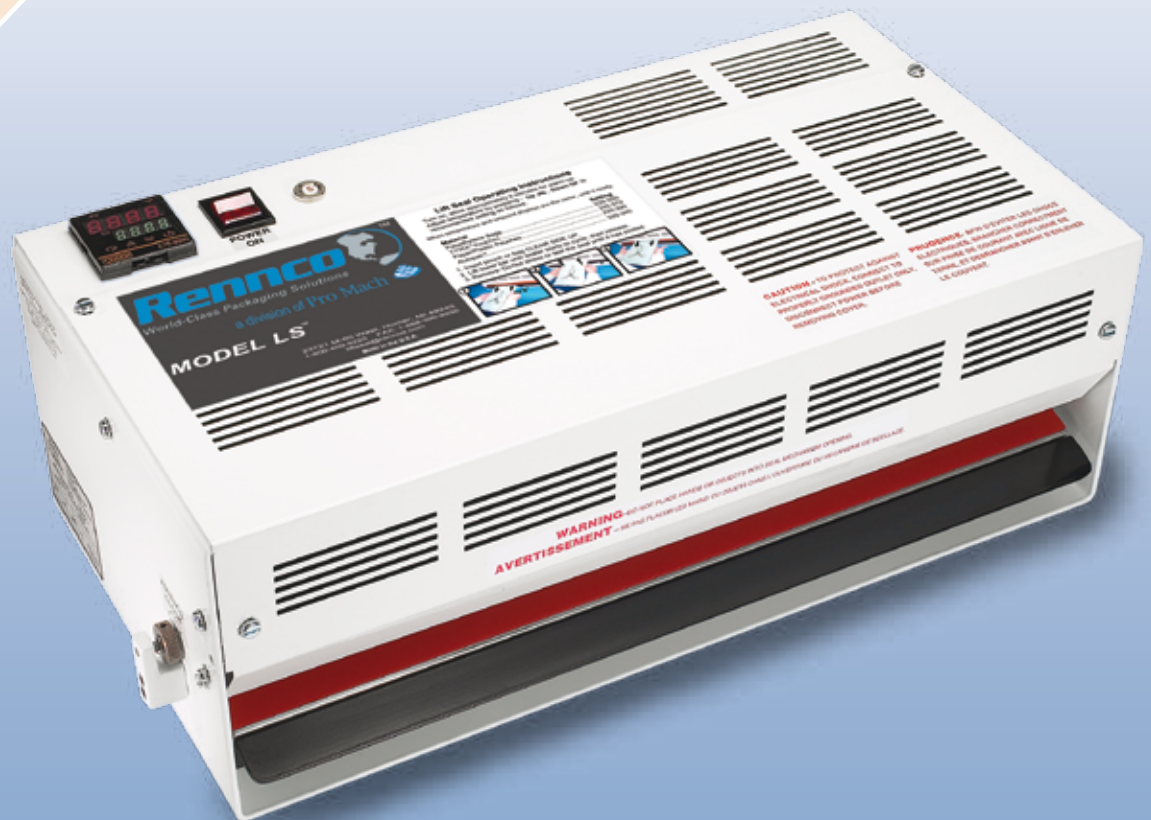


### Advantages

- Digitally controlled to ensure accurate sealing temperatures
- Simple, economical machine specifically designed for bagging of surgical instruments and supplies
- Compact and lightweight table top model
- Seals flat or gusseted paper/plastic, TYVEK™, Autopack™, and dust cover pouches; up to 24" wide with a ½" seal

### Description

Rennco's Lift Seal heat sealing solution provides a compact, efficient alternative to impulse, band and rotary sealers. Rennco stands behind the Lift Seal™ with a 40-year tradition of innovation, experience and industry leading customer service and support.



Model LS-18D seals pouches up to 18" wide  
 Model LS-24D seals pouches up to 24" wide  
 (Both produce a ½" seal)

This information is provided for planning purposes only and is not to be relied upon. Final installation specifications are dependent upon selected supplier's shop drawings.

## Surgical Instruments and Supplies

Accommodates all sterile processing or sterile maintenance pouches including paper/plastic, TYVEK™, Autopak™, and dust cover pouches. Sealing conversions from one material to another requires only a temperature change.

### Operation Summary

- 1 Begin use after a short "warm-up" period.
- 2 Simply enter the temperature setting for the material being used
- 3 Place the edge of the bag in the seal area
- 4 Lift the lower safety bar
- 5 In approximately 2 seconds, the lower safety bar automatically opens for easy removal of the sealed bag.



The Rennco Lift Seal™ Heat Sealer is easy to maintain as well as quick and simple to operate. Constant temperature is maintained by a digital temperature control during the sealing process. The lower silicone rubber bar is raised by a rugged mechanical drive to meet the stationary ½" wide heated sealing bar above. This bar is covered with a special "non-stick" fabric which is advanced by simply turning a knob as the fabric becomes worn. The fabric roll is ample for months of use and is quickly replaced by snapping the new roll into position.

### Specifications

	LS-18D	LS-24D
Size	19-1/4" w x 10-1/4" l x 7-1/4" h	25-3/4" w x 10-1/4" l x 7-1/4" h
Shipping Weight	46 lbs	60 lbs
Electrical Requirements	120V, 5 amps	120V, 5 amps



The Lift Seal™ automatically makes a ½" wide seal with approximately 30 PSI of consistent sealing pressure.

Specifications subject to change without notice

The Lift Seal™ Heat Sealer will not cycle if an object exceeding 1/8" thick is in the sealing area, providing safe operation.



NRTL LISTED



Complies with  
UL 73, UL 499  
CSA 22.2 #68 CSA 22.2 #122  
Listing-#E112078  
Category-Sealing Equipment

Lift Seal is a trademark of Rennco, LLC, TYVEK is a registered trademark of DuPont, Autopak is a registered trademark of OnGard Systems

**Rennco**™  
World-Class Packaging Solutions

a division of Pro Mach

PO Box 116  
300 Elm St.  
Homer, MI 49245  
USA

[www.Rennco.com](http://www.Rennco.com)

Toll-Free: 800-409-5225  
International: 517-568-4121  
Fax: 517-568-4798  
Email: [liftseal@rennco.com](mailto:liftseal@rennco.com)

(Rev 040710)

This information is provided for planning purposes only and is not to be relied upon. Final installation specifications are dependent upon selected supplier's shop drawings.



Item Description:  
Workstation, Pathology Grossing

Equipment Number:  
21-952

Potential Manufacturer  
-----  
Mopec  
-----  
-----

Model Number  
-----  
Elevating ErgoGross Workstation  
-----  
Maestro  
-----

**Further Description:**

- A grossing station used in laboratory medical environment, with height adjustable option for optimal ergonomic use



**Specifications:**

**Dimensions:**  
W x D x H: 1820 x 960 x 1960 mm

**Electrical Requirements:**  
120 V AC, multiple outlets

**Data Requirements:**  
Multiple data ports

**Plumbing Requirements:**  
**Water:** Required  
**Drain:** Required

**Design and Installation Notes:**

- Connection to dedicated ventilation/exhaust system is required
- BMS monitored equipment
- UPS power is required

This information is provided for planning purposes only and is not to be relied upon. Final installation specifications are dependent upon selected supplier's shop drawings.

Item Description  
**Refrigerator, Undercounter, Lab, 5.5 cuft**

Equipment Number  
**22-016**

Manufacturer	Model Number
-----	-----
<b>Sanyo</b>	<b>SR-L6111W</b>
-----	-----
<b>Thermo Scientific</b>	<b>3754</b>
-----	-----
<b>Follett</b>	

Further Description:

Thermo Scientific

- Manual Defrost
- Front venting, may be built-in under counter.
- Manual defrost.
- Two full size adjustable shelves and 1/2 shelf on bottom.
- Door activated interior light.
- Front-mounted adjustable thermostat.

Sanyo:

- Easy to read, angled L.E.D. display and keypad.
- Remote alarm
- Controller lockout function
- Automatic tracking alarm
- Door ajar alarm with alarm delay timer
- Door mounted controller
- Digital input of temperature



Specifications:

Thermo Scientific:

- Door: Solid , single
- Volume: 6 cu.ft
- Interior Dimensions: (20.75"W x 17.75"D x 27"H)
- External Dimensions: 24"W x 23.5"D x 35"H
- Voltage: 115V, 60Hz 160 W
- Weight: 55 kg
- Temperature: -10 to 12 C (14 to 54 F)

Sanyo:

- Exterior Dimensions(in): 23 5/8"W (600 mm) x 34 1/2"H\* (876 mm) x 22 1/2"D (648 mm)
- Volume: 6.1 cu.ft.
- Door: Single, solid
- Wire Shelves: adjustable
- Voltage 115 VAC, 0.9A
- Weight: 50 kg
- Temperature: 1-14 C

Supporting Documents:

Product: [Follett Literature](#)

Installation Considerations:

- Space from the walls for ventilation
- Room Temperature max 32 C
- Central Alarm monitoring
- Essential power

This information is provided for planning purposes only and is not to be relied upon. Final installation specifications are dependent upon selected supplier's shop drawings.





Item Description:  
Refrigerator, pharmaceutical, 40 cuft

Equipment Number:  
22-020.2

Potential Manufacturer	Model Number
-----	-----
Sanyo	MPR
-----	-----
Thermo Scientific	Revco
-----	-----
ABS	Templog

**Further Description:**

- Pharmacy compatible refrigerator with (2-10°C) temperature range, and lockable doors



**Specifications:**

**Dimensions and weight:**

40 Cu.ft capacities:  
W x D x H: 1350 x 820 x 1940 mm  
Weight: 300 kg

70 Cu.ft capacities:  
W x D x H: 2240 x 820 x 2110 mm  
Weight: 300 kg

**Electrical Requirements:**

120 V AC, 60 Hz, 10 A

**Data Requirements:**

1 Data port

**Design and Installation Notes:**

- Connection to the BMS network is required

This information is provided for planning purposes only and is not to be relied upon. Final installation specifications are dependent upon selected supplier's shop drawings.

Item Description  
**Refrigerator-Freezer, Domestic, 10-12 cuft**

Equipment Number  
**22-028.1**

Manufacturer ----- ----- -----	Model Number ----- ----- -----
---	---

**Further Description:**

- Adjustable tempered glass shelves
- Tall bottle storage
- Interior light
- Mechanical thermostat
- Integrated door shelving and egg storage
- Interior light: 1
- Scratch resistant work top
- Reversible door hinge for left or right hand opening
- Color finish: White
- Capacity: 10-12 cu.ft



**Specifications:**

- Height: 60-70 in.
- Width: 24-30 in.
- Depth: 27-30 in.
- Weight: ~ 180.5 lbs
- 120V

**Installation considerations:**

- Consider proper space for ventilation
- If Ice maker is installed cold water need to be plumbed in

This information is provided for planning purposes only and is not to be relied upon. Final installation specifications are dependent upon selected supplier's shop drawings.

Item Description  
**Refrigerator, Undercounter, Domestic**

Equipment Number  
**22-032**

Manufacturer ----- <b>Summit</b> ----- -----	Model Number ----- <b>BI540W</b> ----- -----
--	--

- Further Description:
- Summit's "dual evaporator" for separate cooling of the freezer and fresh food sections for better performance
  - Interior light
  - Automatic defrost fresh food section and manual defrost freezer
  - Adjustable shelves
  - Fruit and vegetable crisper
  - Energy efficient design
  - Door storage for large bottles
  - A large 0 degree freezer that keeps frozen foods (even ice cream) frozen
  - Adjustable thermostat
  - Sturdy external handle
  - 100% CFC free
  - U.L approved
  - 110 V/ 60 hz
  - 3 prong grounded cord



- Specifications:
- Height: 850 mm
  - Width: 620 mm
  - Depth: 600 mm
  - Capacity: 150 liter
  - Weight: 68 kg
  - Defrost (refrigerator): automatic
  - Defrost (freezer): manual
  - Interior Light (refrigerator): yes

This information is provided for planning purposes only and is not to be relied upon. Final installation specifications are dependent upon selected supplier's shop drawings.



## Equipment Datasheet

Item Description: Freezer, Pharmacy, 12 cuft (-30)	Equipment Number: 22-075
---	-----------------------------

Potential Manufacturer ----- Sanyo ----- Thermo Scientific -----	Model Number ----- MDF ----- ULT -----
---	---

**Further Description:**

- Laboratory key lockable compatible freezer with -30 Celsius Preset temperature set point
- Large, easy-to-read digital display with audible/visual warnings for over temperature, under temperature or power failure



**Specifications:**

**Dimensions and weight:**  
W x D x H: 620 x 740 x 1830 mm  
Weight: 130 kg

**Electrical Requirements:**  
120 V AC, 60 Hz, 16 A

**Data Requirements:**  
1 Data port

**Design and Installation Notes:**

- Connection to hospital BMS system is required

This information is provided for planning purposes only and is not to be relied upon. Final installation specifications are dependent upon selected supplier's shop drawings.



Item Description:  
**Freezer, Pharmacy, Undercounter**

Equipment Number:  
**22-077**

Potential Manufacturer	Model Number
Sanyo	SF
Thermo Scientific	Jewett CTF -30, ULT

**Further Description:**

- Laboratory key lockable compatible freezer with -30 Celsius Preset temperature set point
- Large, easy-to-read digital display with audible/visual warnings for over temperature, under temperature or power failure



**Specifications:**

**Dimensions and weight:**  
W x D x H: 610 x 740 x 880 mm  
Weight: 100 kg

**Electrical Requirements:**  
120 V Ac, 60 Hz, 8 A

**Data Requirements:**  
1 data port

**Design and Installation Notes:**

- Connectivity to the hospital BMS system is required

This information is provided for planning purposes only and is not to be relied upon. Final installation specifications are dependent upon selected supplier's shop drawings.



Item Description:  
Boom, Ceiling Mount, Equipment

Equipment Number:  
22-612.1

Potential Manufacturer	Model
-----	-----
Hill-Rom	TruPort / Trumpf
-----	-----
Stryker	Flexis
-----	-----
AMICO	OR Equipment Boom

**Further Description:**

- Boom with modular construction



**Specifications:**

**Dimensions and weight:**

W x D x H: 630 x 1040 x 1750 mm

Note: Width and depth are based on the shelves size , the total final dimension will vary based on what is attached to the boom. The height reflect the height of the boom head and not the height from the ceiling to the bottom of the boom head

**Electrical Requirements:**

Dedicated circuit to run the boom 120 V AC, 60 Hz, multiple drops as per clinical/equipment needs including special power for medical laser equipment

**Data Requirements**

Multiple drops as per clinical needs

**Gas Requirements:**

As per clinical needs (Oxygen, Medical Air...)

**Design and Installation Notes:**

- Integrated complex installation, final selected vendor installation consultation is required prior to installing the boom
- Adequate above ceiling clearance consideration is required for conducts routed to the boom

This information is provided for planning purposes only and is not to be relied upon. Final installation specifications are dependent upon selected supplier's shop drawings.



Item Description:  
Boom, Anesthetic

Equipment Number:  
22-612.3

Manufacturer	Model
-----	-----
Stryker	Flixible boom
-----	-----
Steris	Harmony Air
-----	-----
Olympus	Trumpf

**Further Description:**

- Integrated boom system for anaesthesia and perfusion applications



**Specifications:**

**Dimensions and weight:**  
W x D x H: 1220 x1220 x 2000 mm

**Electrical Requirements:**  
multiple drops as per clinical needs  
Boom requires 120 V AC, 50/60 Hz

**Data Requirements**  
Multiple drops as per clinical needs

**Gas Requirements:**  
As per clinical needs (Oxygen, Medical Air...)

**Design and Installation Notes:**

- Integrated complex installation, final selected vendor installation consultation is required prior to installing the boom
- Adequate above ceiling clearance consideration is required for conducts routed to the boom

This information is provided for planning purposes only and is not to be relied upon. Final installation specifications are dependent upon selected supplier's shop drawings.



Item Description:  
**Boom, Medical**

Equipment Number:  
**22-612.5**

Potential Manufacturer	Model
-----	-----
Hill-Rom	Trumpf True Port
-----	-----
Stryker	FLEXis
-----	-----
Amico	iCE Series

Further Description:

- Modular construction
- Adequate length of support arm
- Adequate height adjustment range



Specifications:

**Dimensions and weight:**

W x D x H: 630x1040 x1750 mm

Note: Width and depth are based on the shelves size  
 Note: The total final dimension will vary based on what is attached to the boom. The height reflect the height of the boom head and not the height from the ceiling to the bottom of the boom head

**Electrical Requirements**

multiple drops as per clinical needs

Boom requires 120 V AC, 50/60 Hz

**Data Requirements:**

Multiple data ports, final count will be based of the boom selection

**Gas Requirements:**

As per clinical needs (Oxygen, Medical Air...)

**Design and Installation Notes:**

- Integrated complex installation, final selected vendor installation consultation is required prior to installing the boom
- Adequate above ceiling clearance consideration is required for conducts routed to the boom

This information is provided for planning purposes only and is not to be relied upon. Final installation specifications are dependent upon selected supplier's shop drawings.





Item Description:  
Camera, Surgical, Boom Mounted

Equipment Number:  
10-549

Potential Manufacturer ----- Stryker ----- Olympus -----	Model Number ----- ----- -----
---	---

**Further Description:**

- High performance camera installed in a bubble shaped protecting glass layer which together attached to an arm extending of a boom or ceiling mounted



**Specifications:**

**Dimensions:**

Camera: Diameter x H: 360 x 260 mm  
(The dimensions doesn't include the arm or handle)

**Electrical Requirements:**

120 V AC, 60 Hz

**Data Requirements:**

1 Data port

**Design and Installation Notes:**

- Conduit consideration is required for data and power between the camera and the designated display

This information is provided for planning purposes only and is not to be relied upon. Final installation specifications are dependent upon selected supplier's shop drawings.



Item Description:  
Integration System, Surgical, Video

Equipment Number:  
20-388

Potential Manufacturer  
-----  
Stryker  
-----  
Olympus  
-----

Model Number  
-----  
Easy suite  
-----

**Further Description:**

- A system that consists of a easylink rack, surgical monitors that's integrated with other equipment in the operating room resulting in a more efficient flow process
- The control unit will be cabinet, wall mounted , or free standing



**Specifications:**

**Dimensions and weight:**

Free standing: W x D xH: 740 x 870 x 1330 mm  
Cabinet mount: W x D xH: 640 x 690 x 1230 mm  
Wall mount: W x D xH: 1170 x 930 x 1450 mm

Weight: 160 Kg

**Electrical Requirements:**

Multiple 120 V AC, 60 Hz, 20 A

**Data Requirements:**

Multiple data ports, 1 Analog phone line

**Design and Installation Notes:**

- Complex integrated installation, final selected vendor directions prior to installation is required
- Installation of panels and systems required
- Dedicated conduit for the system is required through the room to be supplied by Design Builder

This information is provided for planning purposes only and is not to be relied upon. Final installation specifications are dependent upon selected supplier's shop drawings.



Item Description: <b>Fluid Waste Management System</b>	Equipment Number: <b>23-151</b>
---	------------------------------------

Potential Manufacturer ----- <b>Dornoch</b> ----- <b>Stryker</b>	Model Number -----  ----- <b>Neptune</b>
--	--

**Further Description:**

- Comes typically as a system of two component, suction cart and docking station.

**Specifications:**

**Dimensions and weight:**  
Neptune  
Docking station:W x D x H:640 x 590 x 560 mm  
Weight: 45 kg

Suction Cart:W x D x H:490 x 640 x 1780 mm  
Weight: 140 kg

Dornoch  
Suction Cart:W x D x H: 510 x 610 x 840 mm

**Electrical Requirements:**

Docking station: 120 V AC, 60 Hz, 15 A  
Suction Cart: 120 V AC, 60 Hz, 20 A

**Plumbing Requirements:**

**Water:** Hot and Cold required for the docking station  
**Drain:** Required for the docking station



Dornoch

**Design and Installation Notes:**

- Docking station is wall mounted and connected to the water and drain line in a soiled room
- Biohazard materials
- Additional clearance is required for docking the rover and the movement in and out of docking
- Clearance around the unit is needed for operation and use

This information is provided for planning purposes only and is not to be relied upon. Final installation specifications are dependent upon selected supplier's shop drawings.



## Equipment Datasheet

Item Description:  
Laryngoscope, video

Equipment Number:  
23-532

Potential Manufacturer  
-----  
Ambu  
-----  
Olympus  
-----  
Glidescope

Model Number  
-----  
King vision  
-----  
-----

**Further Description:**

- Laryngoscopes with digital display to obtain views of the vocal folds and glottis during procedures on the larynx or other parts of the upper tracheobronchial tree

Flexible	Rigid
	
	
Glidescope	

**Specifications:**

**Dimensions and weight:**  
*King Vision:* Hand held  
Glidescope: W x D x H: 590 x 590 x 1400 mm

**Electrical Requirements:**  
120 V AC, 60 Hz

**Data Requirements:**  
1 data drop

**Design and Installation Notes:**

This information is provided for planning purposes only and is not to be relied upon. Final installation specifications are dependent upon selected supplier's shop drawings.



## Equipment Datasheet

Item Description <b>Laboratory Hood, Laminar Flow</b>
--

Equipment Number <b>24-154</b>
-----------------------------------

Manufacturers ----- <b>NUAIRE / LABCONCO</b>	Model -----
--	----------------

The AireGard ES 201 Horizontal Laminar Airflow Workstation provides a HEPA filtered clean work area for laboratory appliances, microscopes, pipetting, compounding sterile drug preparations or IV admixture, or any applications requiring a clean air environment.



- Further Information:**
- Combined Vertical and Horizontal sash 6' wide
  - Containment
    - Particulates: Yes
    - Vapors and Gases: Yes
  - Performance
    - Face Velocity: 100 FPM
    - Recirculated Air %: 0
    - Exhausted Air %: 100
  - Stand: Optional (with or without cabinet)

- Specifications:**
- Overall Dimensions:  
74" x 32" x 52" (1880 x 813 x 1321)
  - Optional base cabinet:
  - Weight : Net Weight: 550lb / 249 kg
  - Electrical
    - 115 VAC, 60 Hz, Single Phase
    - Total Amps: 11.2

**Supporting Documents:**

Product: <http://www.nuaire.com/products/airegard-es-energy-saver-nu-201-table-top-horizontal-airflow-workstation.html>

This information is provided for planning purposes only and is not to be relied upon. Final installation specifications are dependent upon selected supplier's shop drawings.

Item Description Warmer , Milk	Equipment Number 24-194
-----------------------------------	----------------------------

Potential Manufacturer ----- Medela ----- Ameda -----	Model Number ----- Waterless milk warmer ----- -----
--	--

**Further Description:**

- Consistent milk warmer, beside unit that can accommodate breast milk bottles and most containers



**Specifications:**

**Dimensions:**

Device: W x D x H: 180 x 250 x 250 mm

Mobile on a stand: 510 x 510 x 1400 mm

**Electrical Requirements:**

120 V AC, 60 Hz, 5Amp

**Design and Installation Notes:**

This information is provided for planning purposes only and is not to be relied upon. Final installation specifications are dependent upon selected supplier's shop drawings.



Item Description  
**Exercise, Bike, Recumbent**

Equipment Number  
**24-691**

Manufacturer	Model
KETTLER	Giro GT Training Cycle
	Giro R Recumbent Cycle

**ECRI Definition:**  
Aerobic cycle exercisers designed to simulate the motions of riding a bicycle; the bicycles remain stationary while the wheels move. These exercisers are usually self-powered devices; they may use friction belts or wheels, magnets, fans, or hydraulics to increase resistance. Some stationary bicycles may include a motor to regulate speed. The bicycles usually include workout program modes that can adjust resistance and a monitor to display the workout time, distance, speed, calories burned, and heart rate; they often have handlebars with grip pulse sensors, and some bicycles have heart-rate controls that can adjust the resistance level to suit the targeted heart rate. Stationary bicycle exercisers are intended to increase cardiovascular endurance by keeping the heart and pulmonary rate elevated for a continuous period of time. Additionally, they provide strength and endurance to the lower-limb muscles (e.g., quadriceps, hamstrings, calves, gluteus). Dedicated bicycles with upright and recumbent sitting positions for users are available.

**Further Description:**

- Self-generated power – no plug required
- Powder coated, high carbon tubular steel frame
- 18.2 kg (40 lb.) flywheel
- No maintenance Poly V drive belt system
- Maintenance free sealed ball bearings
- Quick start feature
- Motor controlled variable magnetic resistance system
- 32 levels of resistance
- Blue back-lit LCD display
- Displays: Time, total distance, speed, RPM, energy consumption and heart rate
- Graphic dot matrix hill profiles
- 12 workout programs
- Heart rate control program automatically adjust resistance to maintain target rate
- Hand grip sensors for heart rate
- Rubber coated handlebars
- 17.8 cm (7 in.) wide, contoured, thick padded saddle with 11 position adjustments
- Aggressive grip pedals with toe cages and heavy duty crank arms
- Built-in levelers
- Transport wheels
- Weight capacity: 129.3 kg (285 lb.)



**Installation consideration:**

- Possible floor mounting
- Consider enough clearance around the unit for practical usage

**Specifications:**

- Dimensions (L x W x H): 170 cm x 64 cm x 115 cm (67 in. x 25 in. x 45 in.)
- Weight: 65.8 kg (145 lb.)
- May need electrical 120V

This information is provided for planning purposes only and is not to be relied upon. Final installation specifications are dependent upon selected supplier's shop drawings.



# Equipment Datasheet

Item Description: Monitor, Vital Signs	Equipment Number: 25-209
---	-----------------------------

Potential Manufacturer ----- Welch Allyn ----- Philips ----- GE	Model Number ----- Spot Vital LXI ----- SureSign ----- Dinamap Pro Care
---	---

**Further Description:**

- A monitor used to acquire patient vital signs parameters with different selectable options available depending on the clinical needs



**Specifications:**

**Dimensions:**

*Mobile Vital Sign Monitor:*  
W x D x H: 510 x 510 x 1400 mm

*Wall mounted:* 220 x 150 x 270 mm

**Electrical Requirements:**

120 V AC, 60Hz

**Data Requirements:**

1 data port

**Design and Installation Notes:**

- Wall backing is required if wall mounted

This information is provided for planning purposes only and is not to be relied upon. Final installation specifications are dependent upon selected supplier's shop drawings.





## Equipment Datasheet

Item Description:  
Cart, Treatment, Endoscopy, Video System

Equipment Number  
27-860

Potential Manufacturer	Model Number
-----	-----
Olympus	-----
-----	-----
Pentax	-----
-----	-----
Stryker	-----

**Further Description:**

- The system consists of the following:  
Monitor, Video processor, Light sources, Printer, Cart



**Specifications:**

**Dimensions:**  
Total system: W x D x H: 800 x 800 x 2000 mm

**Electrical Requirements:**  
120 V AC, 60 Hz 15A

**Data Requirements:**  
1 Data port

**Design and Installation Notes:**

- UPS power is required

This information is provided for planning purposes only and is not to be relied upon. Final installation specifications are dependent upon selected supplier's shop drawings.



Item Description:  
**Cataract Extraction Phacoemulsification**

Equipment Number  
**27-995**

Manufacturer	Model Number
-----	-----
<b>Bausch &amp; Lomb</b>	<b>BL 1443</b>
-----	-----
-----	-----

- Further Description:
- Device intended for the emulsification and removal of cataracts, anterior and posterior segment vitrectomy
  - The system is designed for use in both anterior and posterior segment surgeries
  - Capabilities for phacofragmentation, irrigation / aspiration, bipolar diathermy, vitrectomy, viscous fluid injection / removal, and air / fluid exchange operations
  - Wireless foot pedal



- Specifications:
- Electrical**
- Primary: 100 - 240 VAC, 50/60 Hz, 1000 VA
  - Fuses (2): 10.0A 250V
- Dimensions**
- 122 cm (H) x 45.7 cm (W) x 45.7 cm (D)
  - 48 in. (H) x 18 in. (W) x 18 in. (D)
  - 162.5 cm (64 in.) from floor to top of IV Pole
  - Approximate Weight: 230 pounds (114 kg)
  - Recommended Tray Capacity: 12 lbs (5.4 kg)
- Air input**
- Filtered medical grade air or medical grade nitrogen
  - 72.5 (5 bar or 50 kPa) to 100 psig Max (6.9 bar or 690 kPa)
  - flow rate of 2.25 SCFM (63.7 SLPM).

Specifications:  
Supporting document

This information is provided for planning purposes only and is not to be relied upon. Final installation specifications are dependent upon selected supplier's shop drawings.



Item Description:  
**Cognitive Testing Equipment**

Equipment Number  
**28-017**

Potential Manufacturer ----- <b>Dynavision</b> -----	Model Number -----  -----
---	------------------------------------

**Further Description:**

Used to evaluate and train visual, cognitive, and motor function across all ages, stages, and conditions.



**Specifications:**

Weight:

- Out of Box – 127 Lbs
- Shipping Container - 1 box; 195 Lbs. (Plus pallet)

Dimensions:

- Dynavision D2 Light Board (Wall Mount) – No Stand
  - 4'x4' target board. Size of frame: 52" wide
  - 64 touch button lights arranged in 5 rings
  - Light board in lowest position right out of the crate 5'5.75" (65.75"); (Sticks out from wall about 7" due to wheels)
  - Max. Height 7'11.5" (95.5") - Min. 5'5.75" (65.75")
- In Crate Box is: 72" x 48" x 8"

Power:

- 115 V - 50/60 Hz or 230 V - 50/60 Hz
- Easily switched at the power entry module.

**Design and Installation Notes:**

Installation:

- Any wall mounting surface; wood, drywall, or masonry
- Detailed installation instructions and hardware included.
- The D2 should be installed in an area with controllable lighting as it should be run at a low ambient light level.

This information is provided for planning purposes only and is not to be relied upon. Final installation specifications are dependent upon selected supplier's shop drawings.



Item Description:  
Tables, Operating, Orthopedic

Equipment Number  
34-393

Potential Manufacturer	Model Number
----- Steris -----	----- ----- -----
Hill-Rom -----	----- ----- -----

**Further Description:**

- Adjustable length OR table for Spinal (Ortho) procedures that can support patient while moving in different direction
- All the additional accessories that is used for this procedure are usually transported by the accessories cart

**Specifications:**

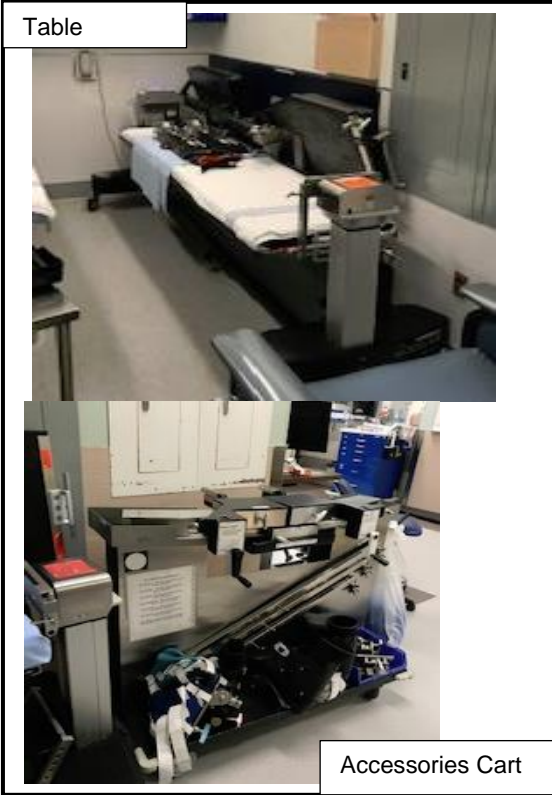
**Dimensions and weight:**

OR Table : W x D x H: 1000 x 2300 x 1200 mm  
Table Weight: 300 Kg

Accessories Cart: W x D x H: 1600 x 700 x 1400 mm

**Electrical Requirements:**

120 V AC, 60 Hz



**Design and Installation Notes:**

This information is provided for planning purposes only and is not to be relied upon. Final installation specifications are dependent upon selected supplier's shop drawings.



Item Description:  
Table, Operating, Orthopedic  
Accessories

Equipment Number  
34-393.1

Potential Manufacturer	Model Number
----- Steris	-----
----- Hill-Rom	-----
-----	-----

**Further Description:**

- This cart stores the additional accessories that is used for operating room procedures



**Specifications:**

**Dimensions and weight:**

Accessories Cart: W x D x H: 1600 x 700 x 1400 mm

**Design and Installation Notes:**

This information is provided for planning purposes only and is not to be relied upon. Final installation specifications are dependent upon selected supplier's shop drawings.